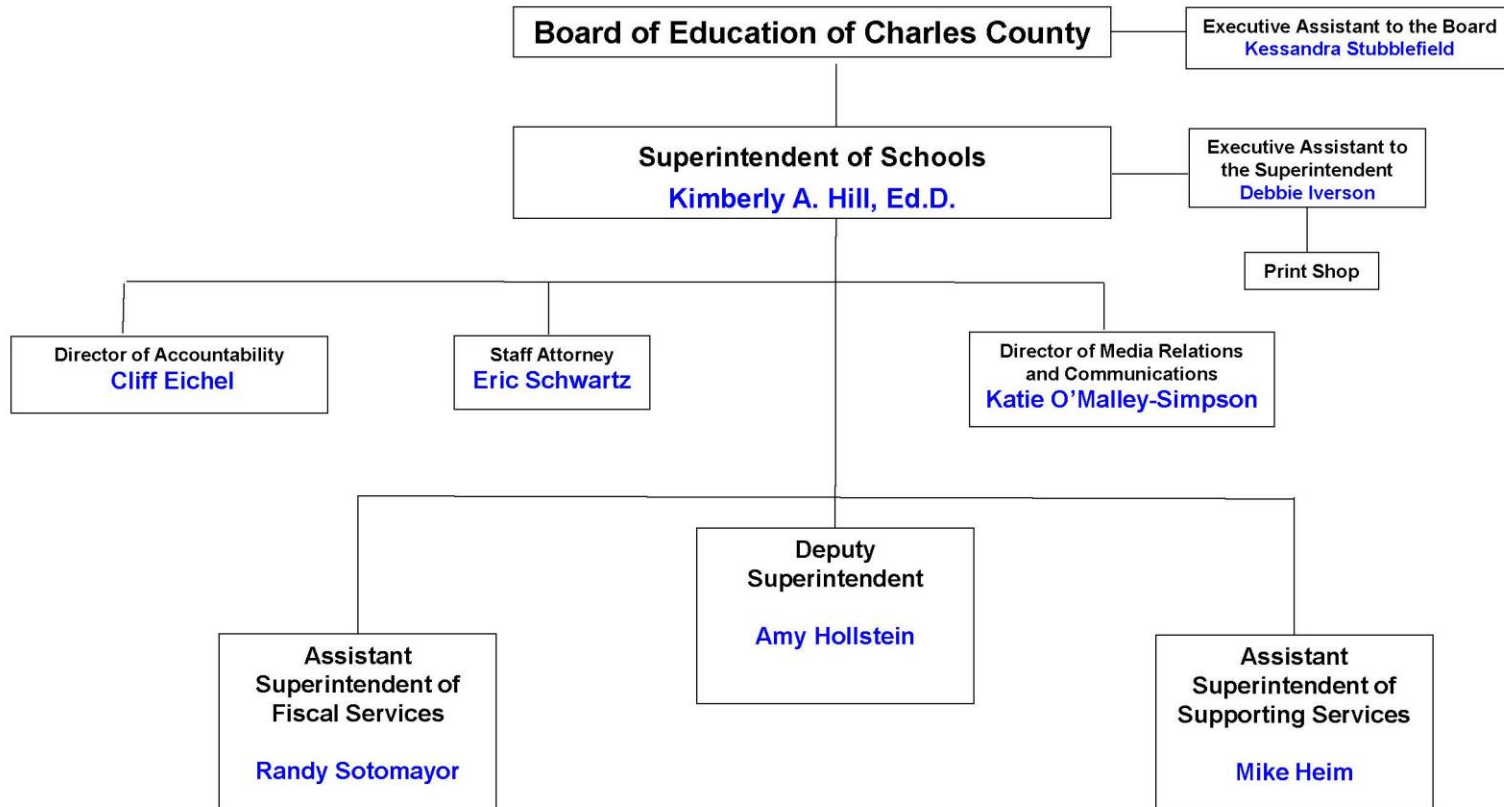
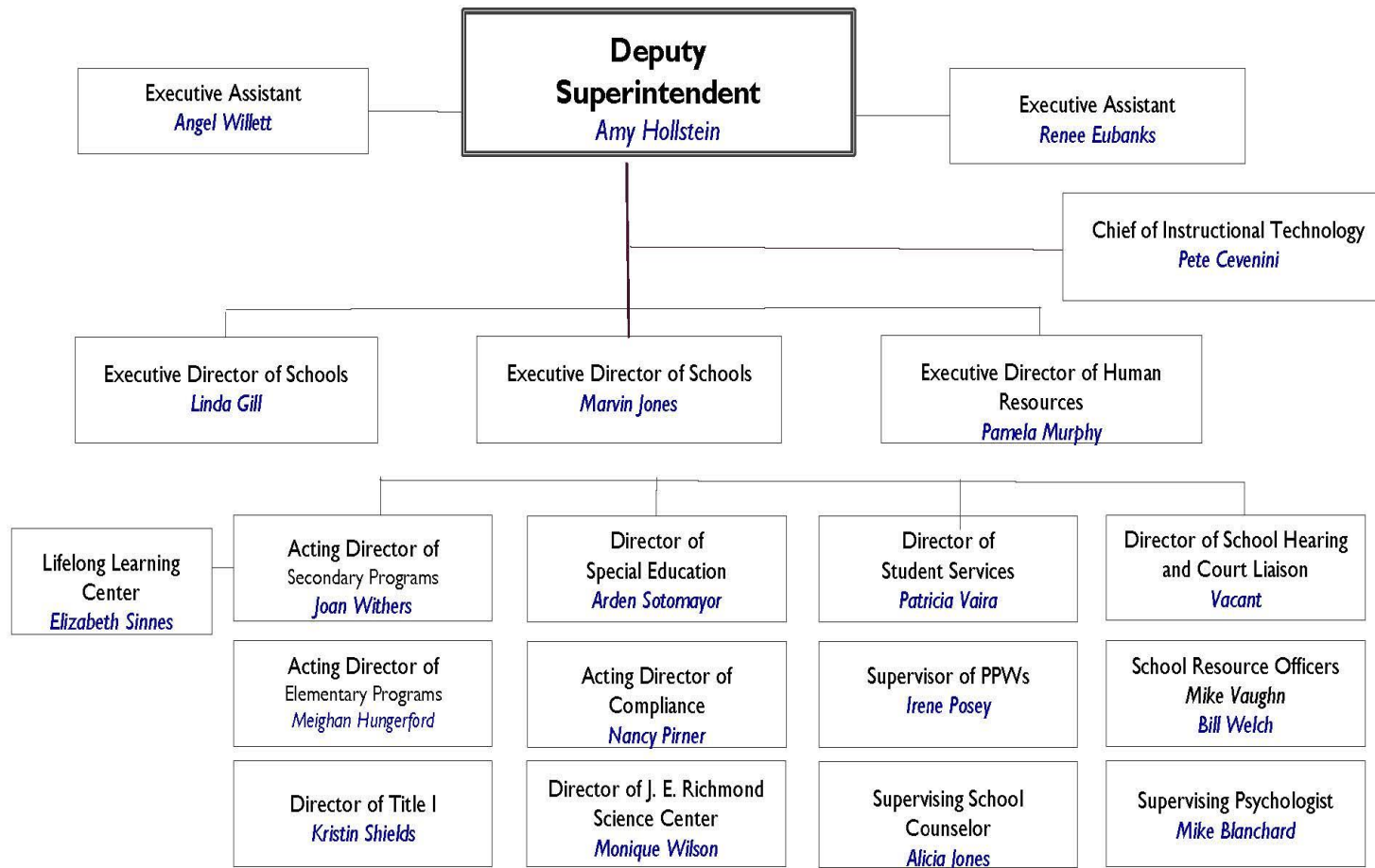


# Charles County Public Schools Administrative Organizational Chart

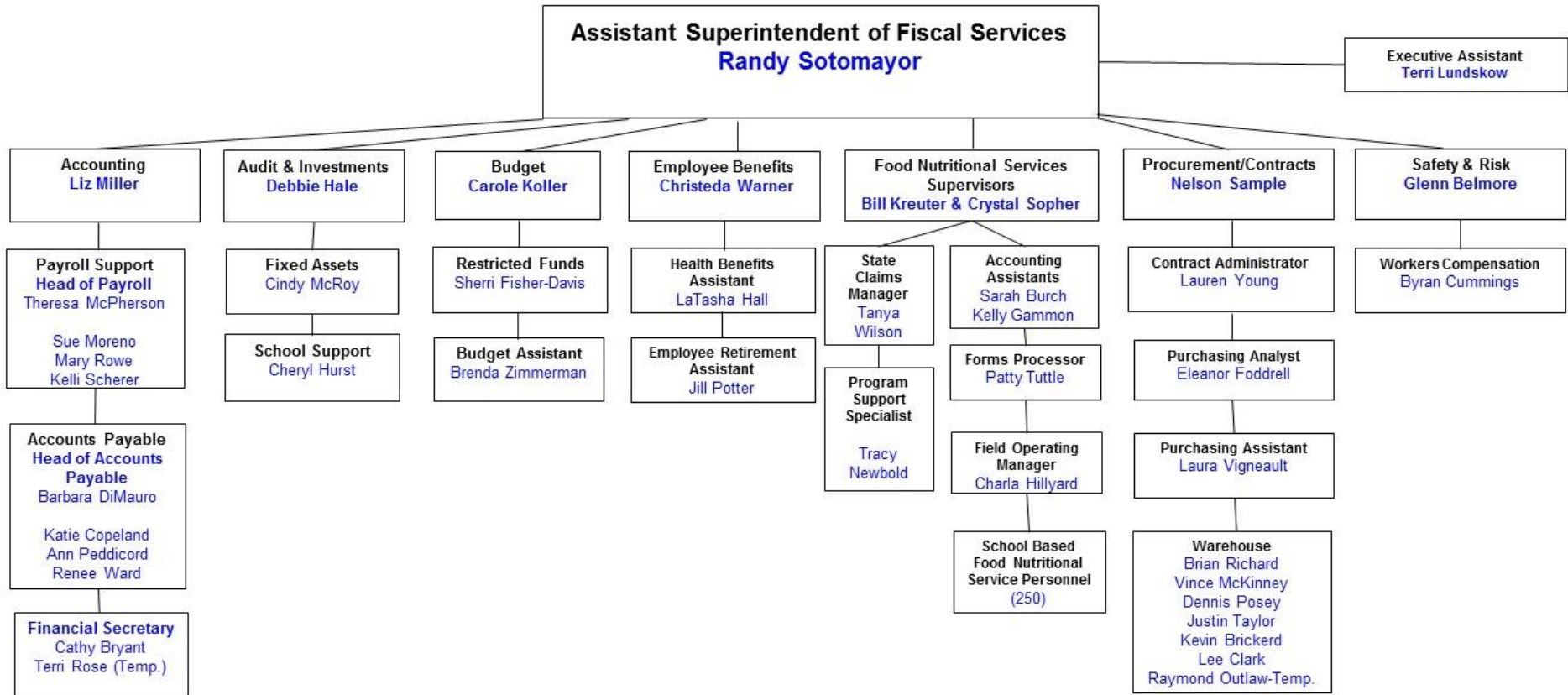


July 29, 2016

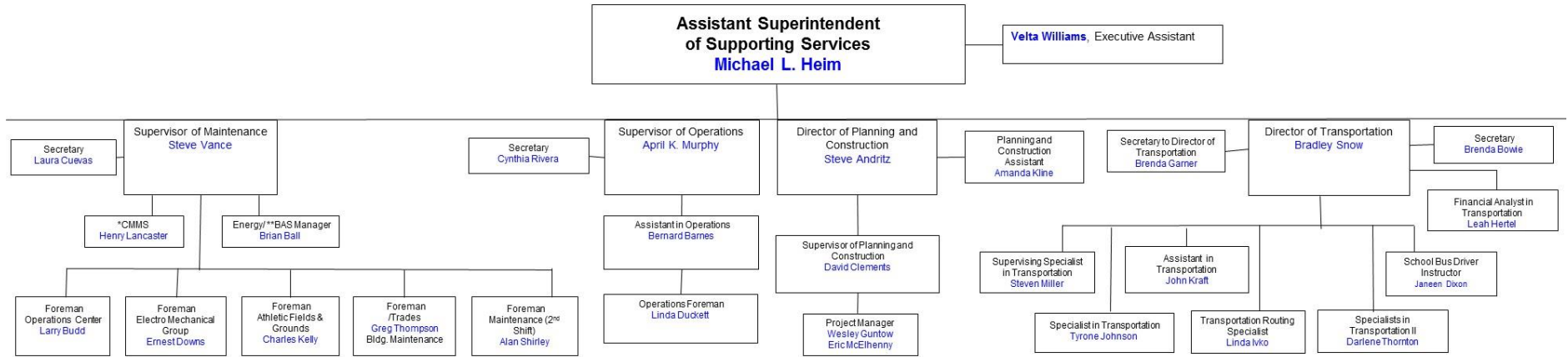
CHARLES COUNTY PUBLIC SCHOOLS  
**Office of the Deputy Superintendent**



## Office of the Assistant Superintendent of Fiscal Services



# Office of the Assistant Superintendent of Supporting Services



\*\*BAS - Building Automation Systems

\*CMMS- Computerized Maintenance Management System

July 31, 2016