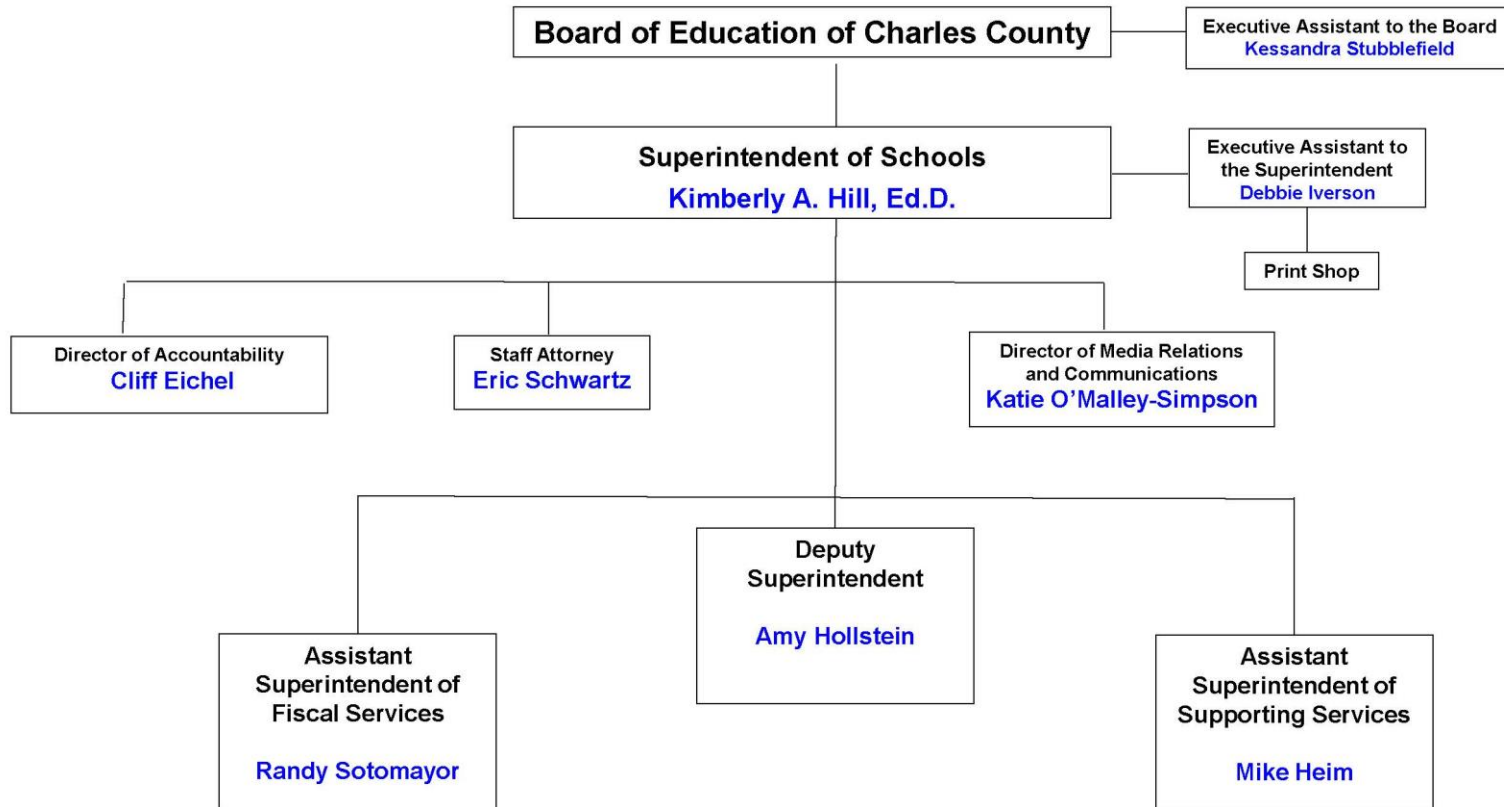
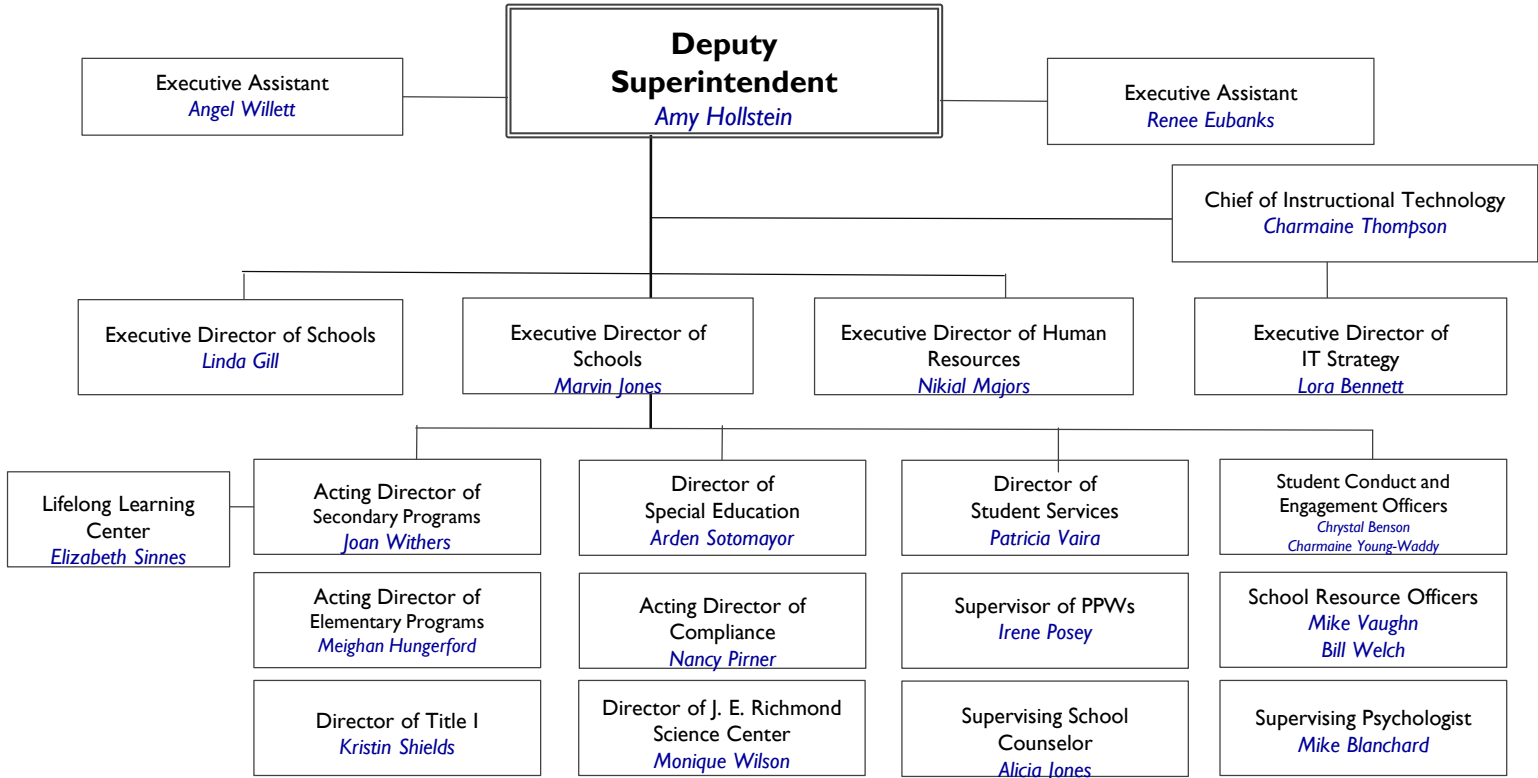


# Charles County Public Schools Administrative Organizational Chart

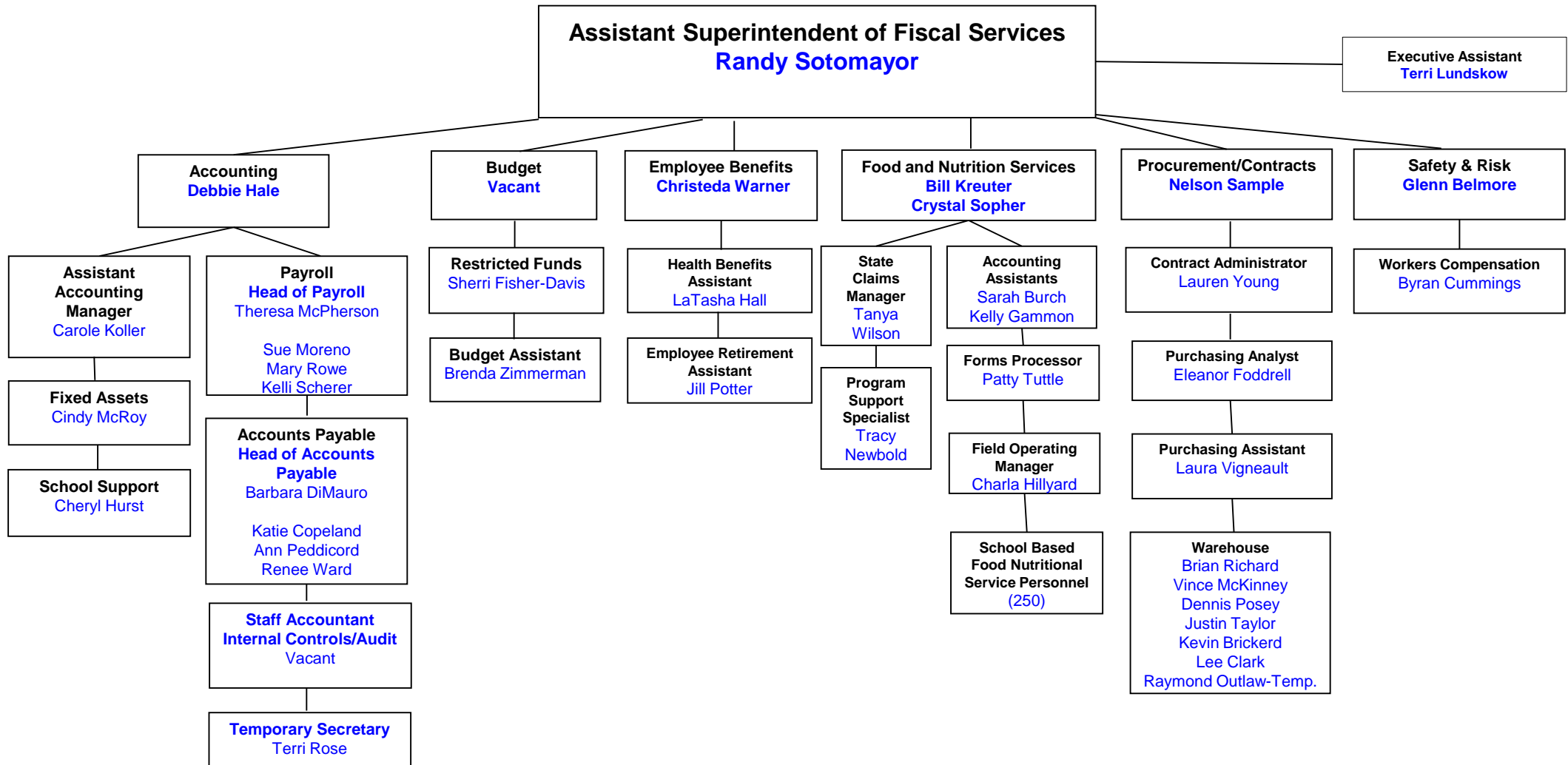


July 29, 2016

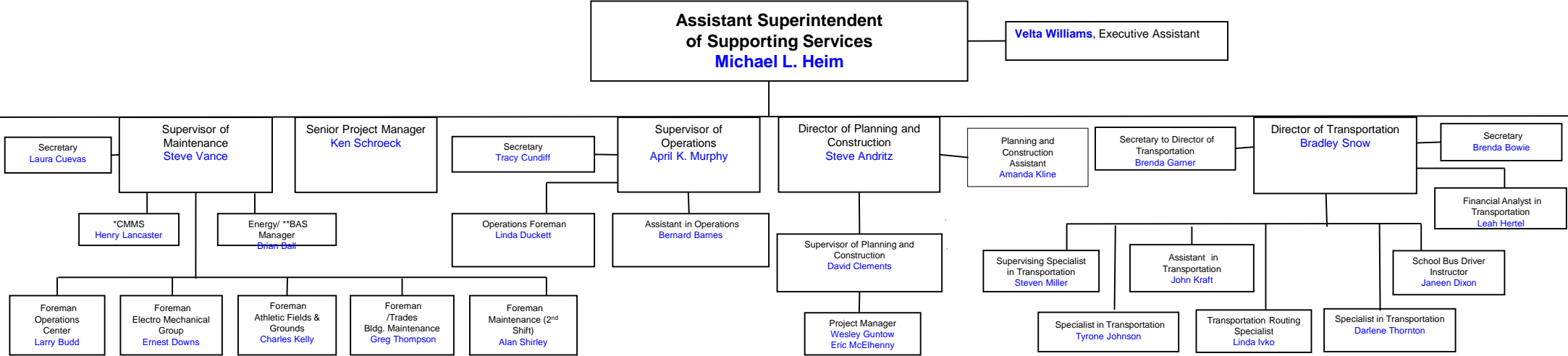
CHARLES COUNTY PUBLIC SCHOOLS  
Office of the Deputy Superintendent



# OFFICE OF FISCAL SERVICES ORGANIZATIONAL CHART



# Office of Supporting Services



\*\*BAS - Building Automation Systems

\*CMMS- Computerized Maintenance Management System