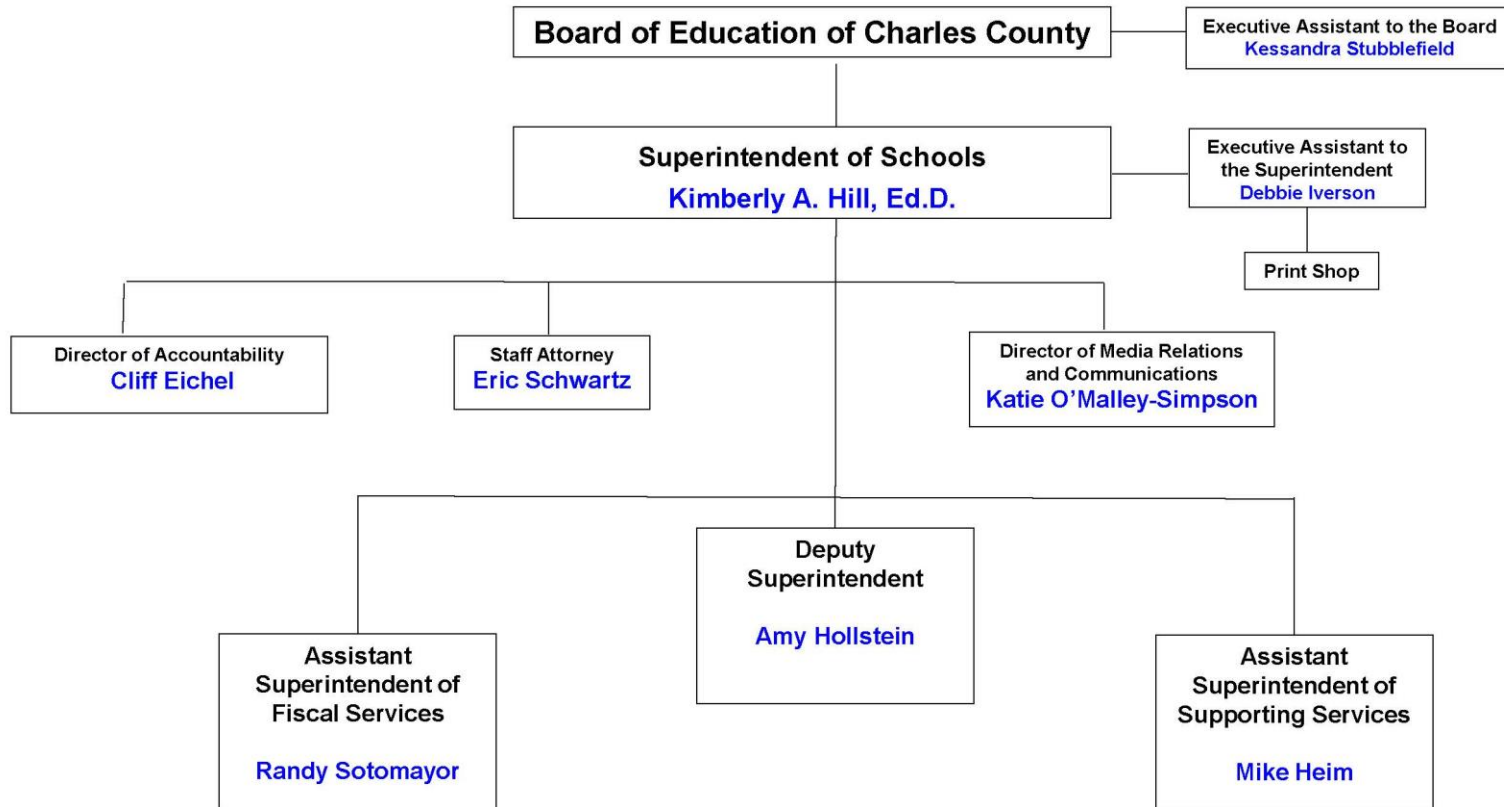
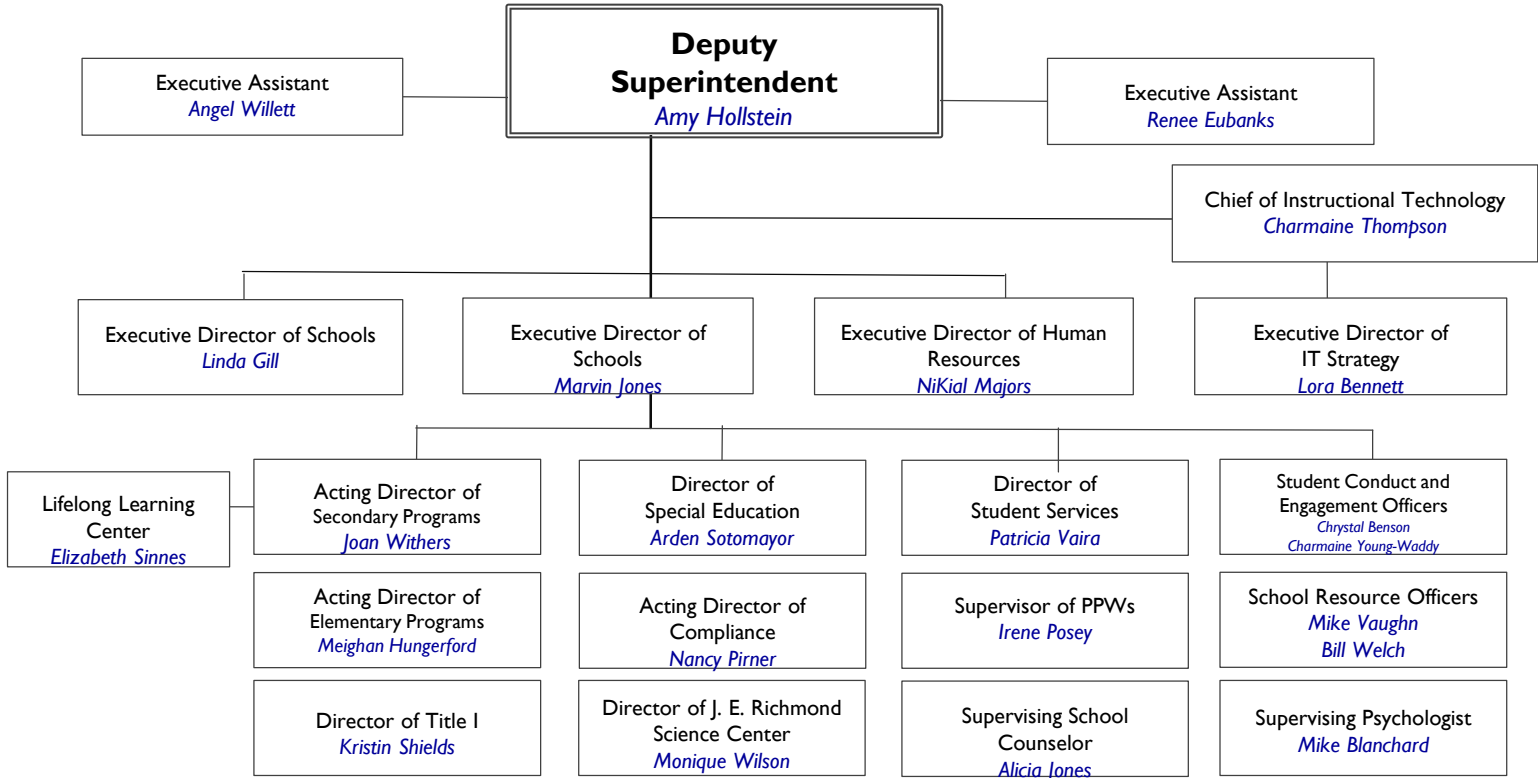


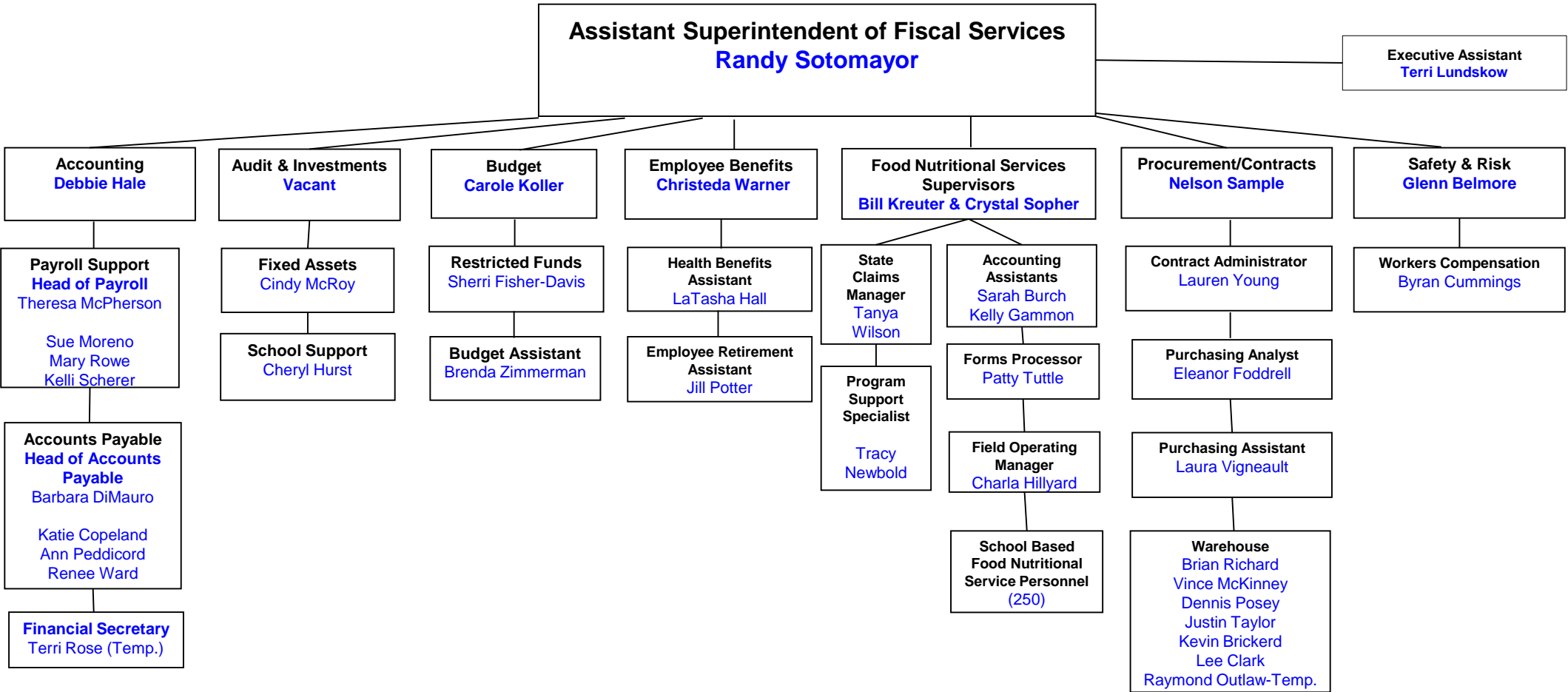
Charles County Public Schools Administrative Organizational Chart



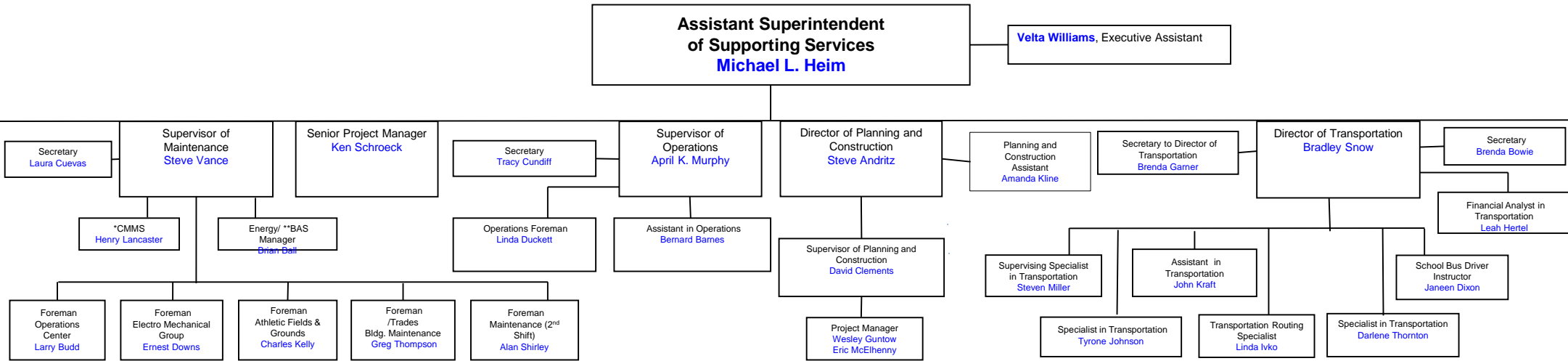
CHARLES COUNTY PUBLIC SCHOOLS
Office of the Deputy Superintendent



OFFICE OF FISCAL SERVICES ORGANIZATIONAL CHART



Office of Supporting Services



**BAS - Building Automation Systems

*CMMS- Computerized Maintenance Management System

July 31, 2017