

CHARLES COUNTY PUBLIC SCHOOLS COMPREHENSIVE MIDDLE SCHOOL REDISTRICTING SCHOOL YEAR 2022-2023

SUPERINTENDENT'S RECOMMENDATION

SEPTEMBER 14, 2021



BENJAMIN STODDERT MIDDLE SCHOOL

- \$48,171,000 renovation and addition
- Square footage increases from 105,800 to 148,317 square feet
- State Rated Capacity (SRC) increases from 711 to 975
- Phased occupied construction to be completed in the Fall of 2022





Superintendent's Charge

The committee is charged with creating two alternatives that will establish new middle school boundaries. This is a comprehensive middle school redistricting with a focus on redrawing an expanded attendance zone for Benjamin Stoddert which is receiving a complete renovation and expansion scheduled for completion for the start of SY 22/23.

Board Policy 1900 establishes procedures for redistricting. Our goal is to move some students among all middle schools with due consideration of State Rated Capacities (SRCs) and anticipated growth using target enrollments provided by school and county government staffs.



General Guidelines

- All neighborhoods are eligible for redistricting except for those currently designated as non-transport (walking) zones
- Whenever possible, neighborhoods should not be divided between different schools
- Account for current and future residential development when meeting enrollment targets
- Consult with transportation representatives regarding the possible effects to existing bus routes when moving students
- When proposing changes to existing school zones, move students farthest from their current school to another school whose current attendance boundaries borders the existing school

Timeline

October 2020	Redistricting committee selected. Public Information Town Hall session held October 26, virtually.
November 2020	Redistricting committee began meeting weekly. Meetings paused due to COVID-19 pandemic.
May 2021	Committee resumed its weekly meetings.
July 2021	Redistricting committee completed work.
August 2021	Board received a report on committee's recommendations on Aug. 10. Public hearings were held Monday, Aug. 23, 2021 from 6 to 8 p.m., virtually, and Tuesday, Aug. 24, 2021 from 6:30 to 8:30 p.m. at La Plata High School.
September 2021	<p>Public hearing conducted on Tuesday, September 7 from 6 to 8 p.m. via Zoom.</p> <p>Superintendent presents recommendation to the Board at its Sept. 14 meeting.</p> <p>Public hearings on recommendation are set for Monday, Sept. 27, 2021, from 6:30 to 8:30 p.m. at Westlake High School, and Tuesday, Sept. 28, 2021, from 6 to 8 p.m., virtually.</p>
October 2021	Board takes action. Redistricting decision takes effect at the start of the 2022-2023 school year.



Redistricting Committee

The Board at its Oct. 13, 2020 meeting selected 11 parents through a random drawing to serve on the committee – two elementary, one high school and eight from the middle schools. Additionally, the Board of Education selected three community members at large for the committee and four school principals.

Three local government planners and CCPS staff support the committee.

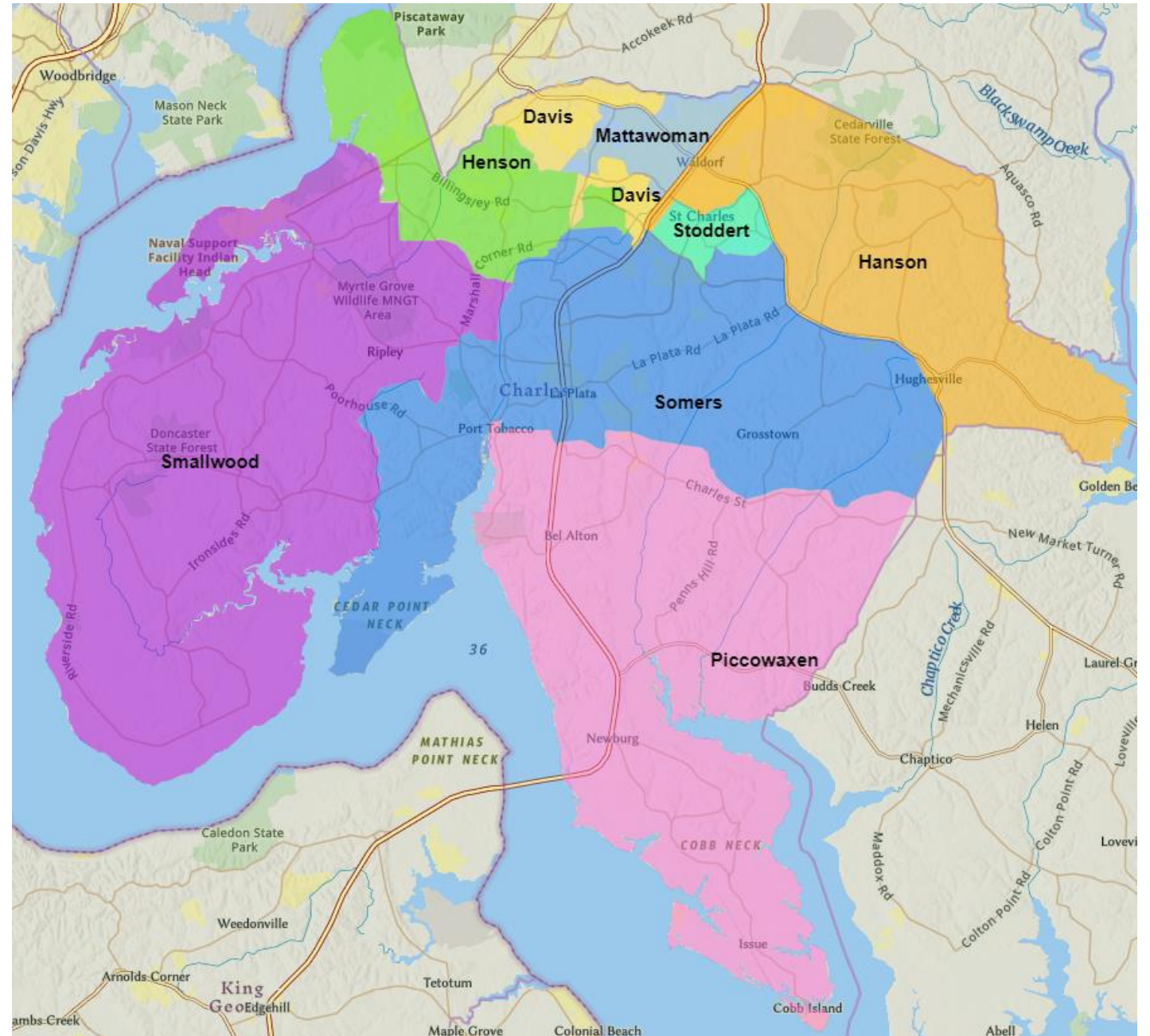


Superintendent's Recommendation

The Superintendent recommends Alternative A.

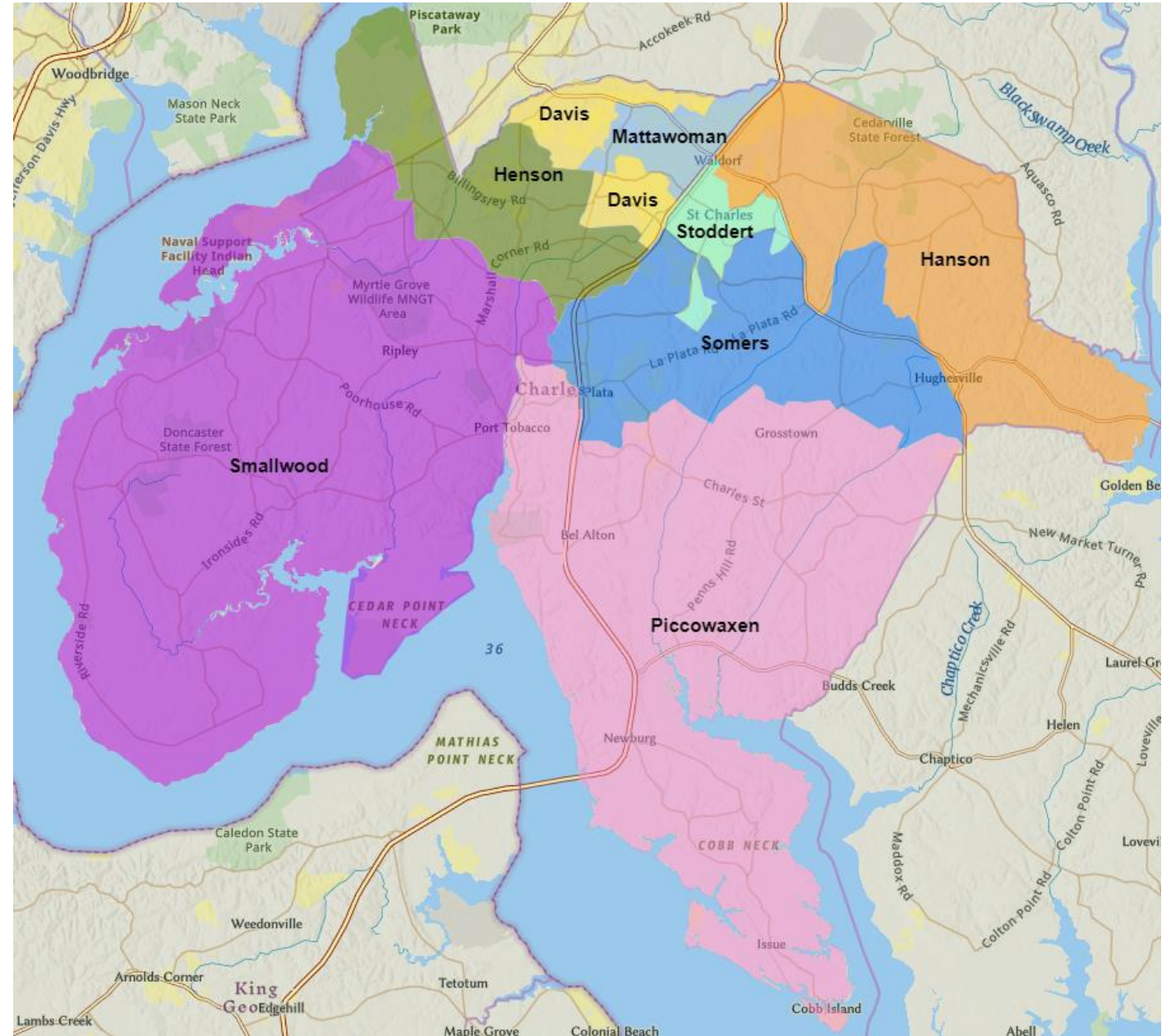
- Better balance of growth areas (St. Charles and Heritage Green) between Benjamin Stoddert Middle School and Milton Somers Middle School
- Better use of the added capacity at Benjamin Stoddert Middle School
- MS enrollment in the development district is at or near State Rated Capacity (SRC) to support future MS #9
- Plan A moves less existing students

Current CCPS Middle School Zones



Overview of Alternative A

Alternative A
moves **992** students.



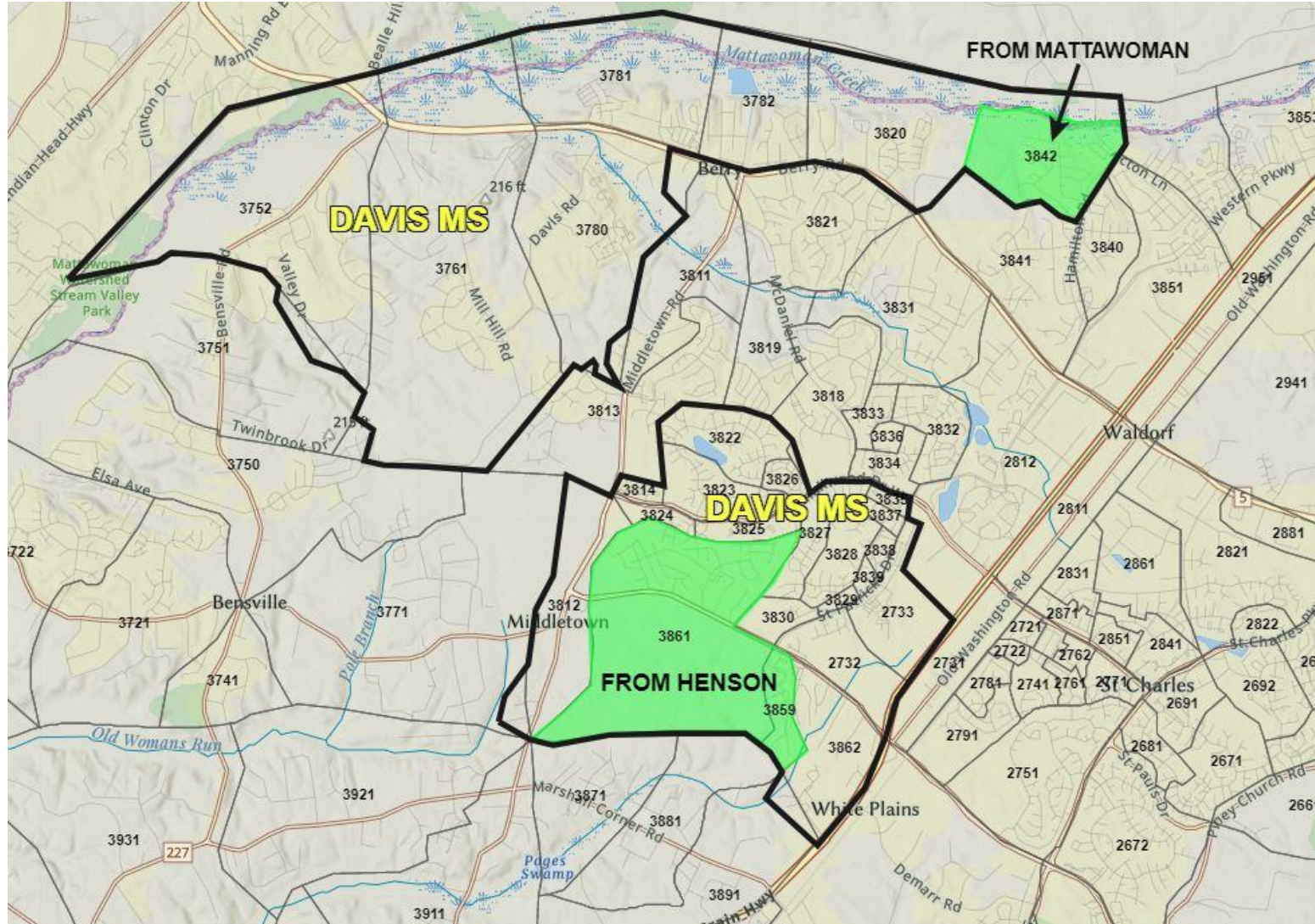
Davis Zone – Changes Alternative A

State Rated
Capacity (SRC):

997

Official Enrollment
(9/30/19):

885



SY2022-23:

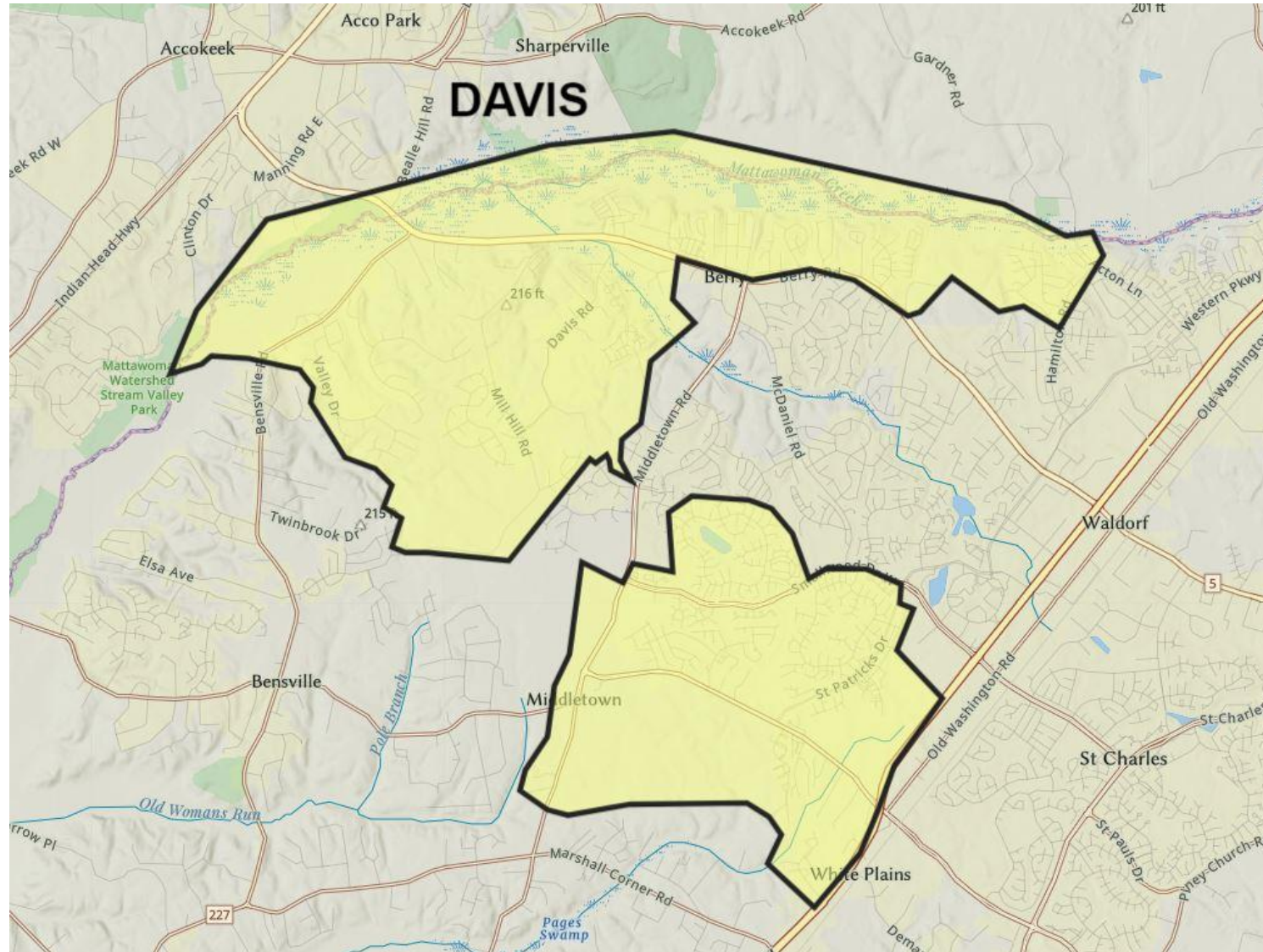
934

SY2025-26:

950

New Davis Zone with Enrollment Blocks
Alternative A

New Davis Zone Alternative A



[illegible]

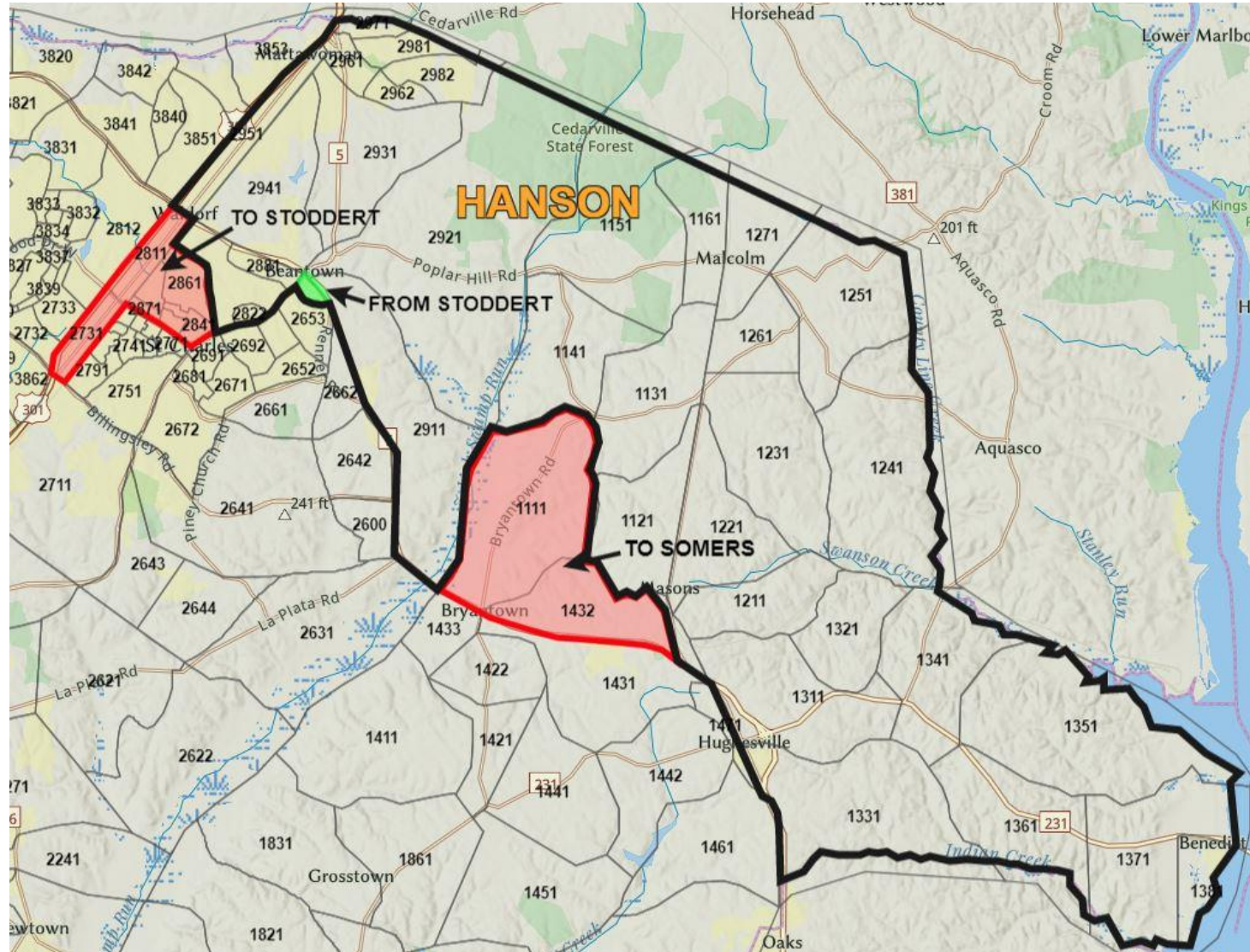
Alternative A

State Rated Capacity (SRC):

797

**Official Enrollment
(9/30/19):**

893

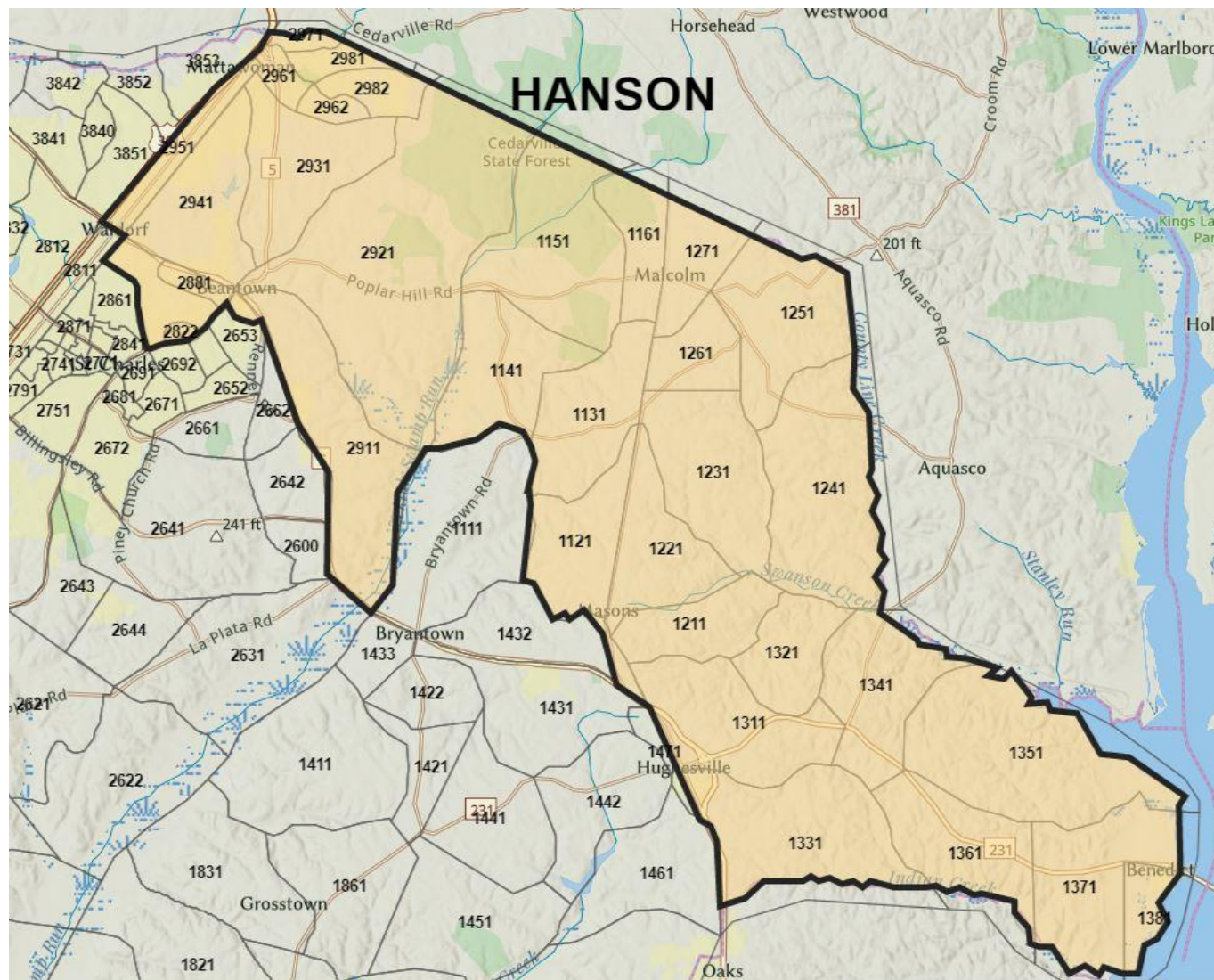


SY2022-23:

805

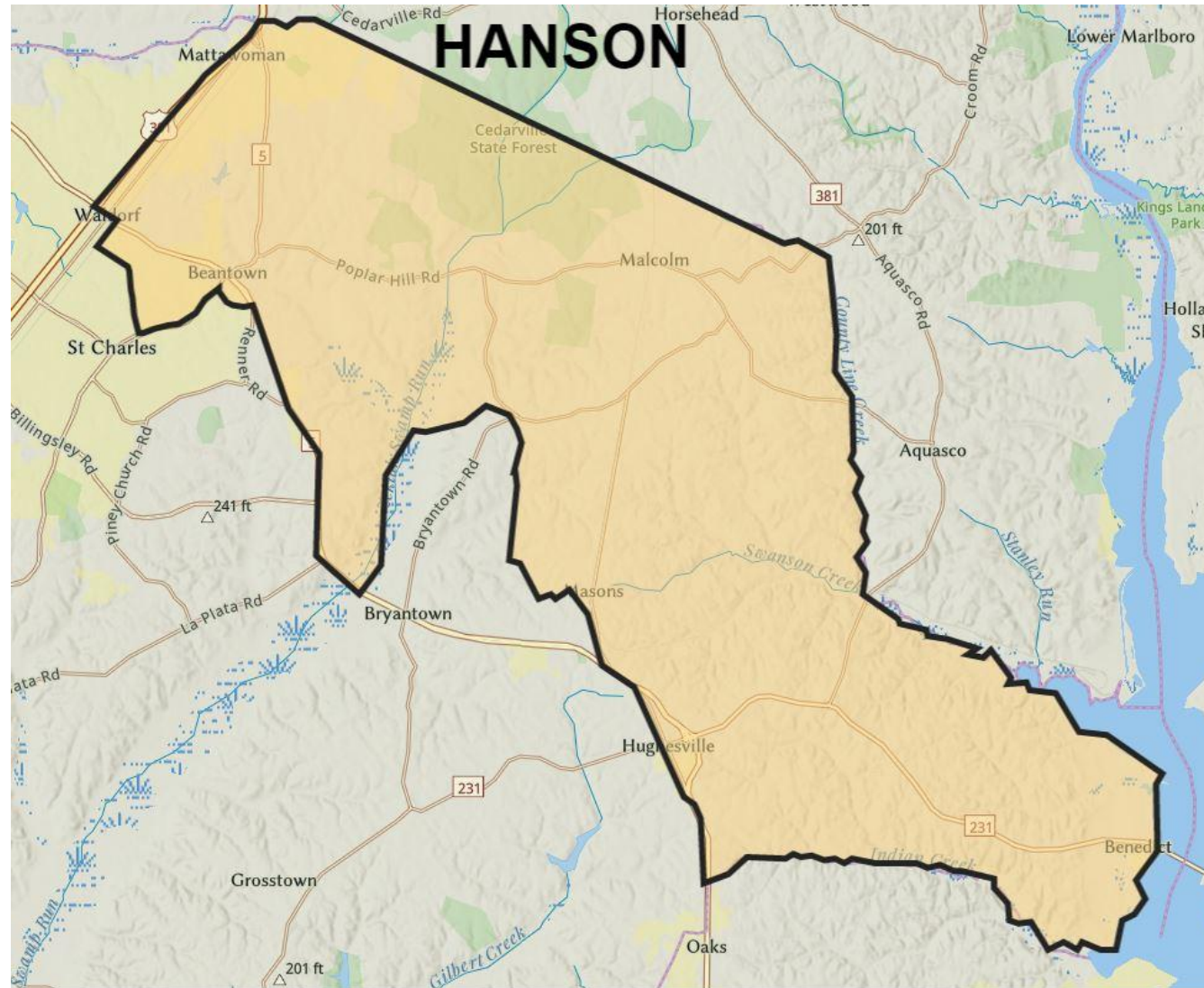
SY2025-26:

833



New Hanson Zone

Alternative A



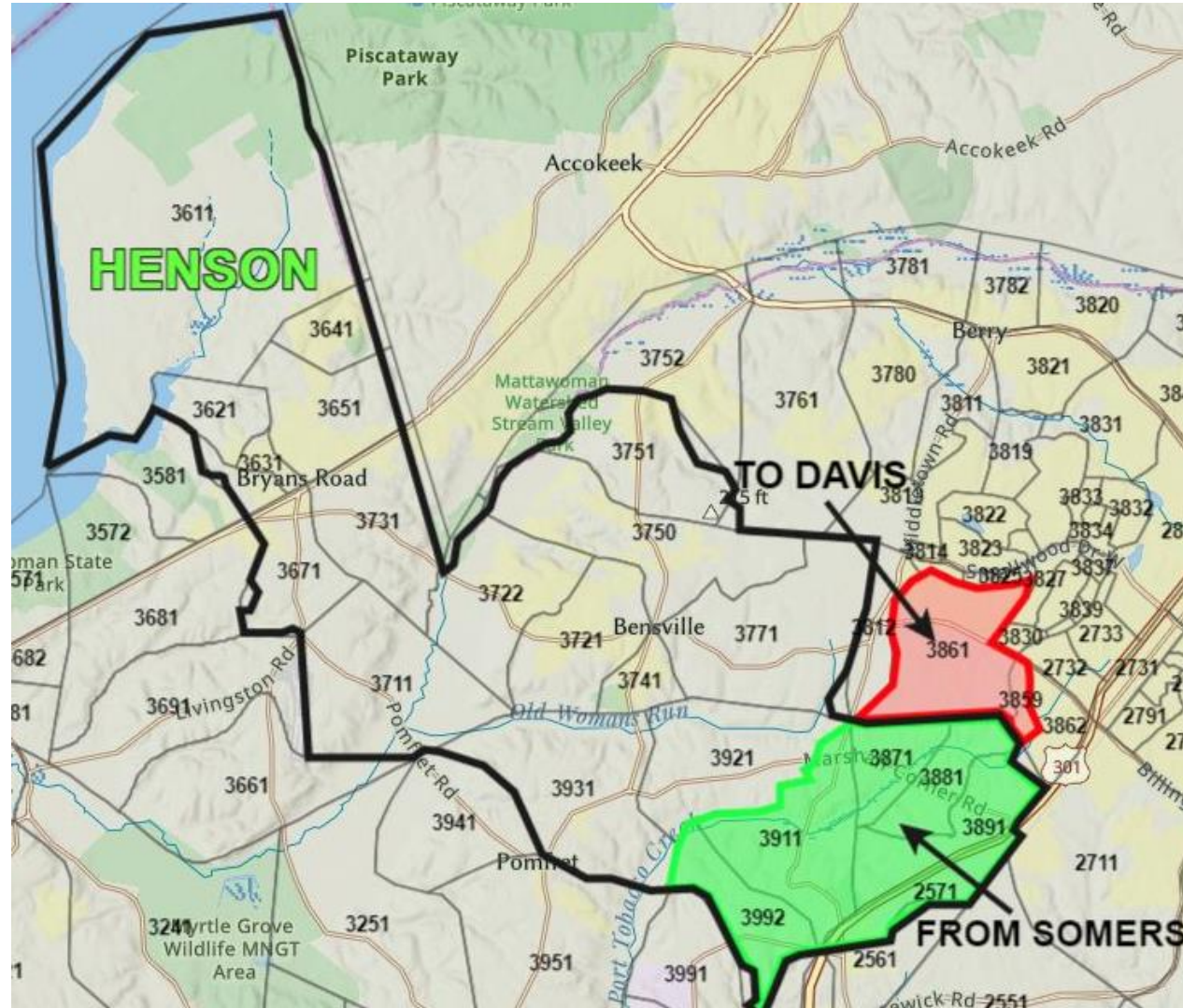
Henson Zone – Changes Alternative A

State Rated Capacity
(SRC):

668

Official Enrollment
(9/30/19):

811



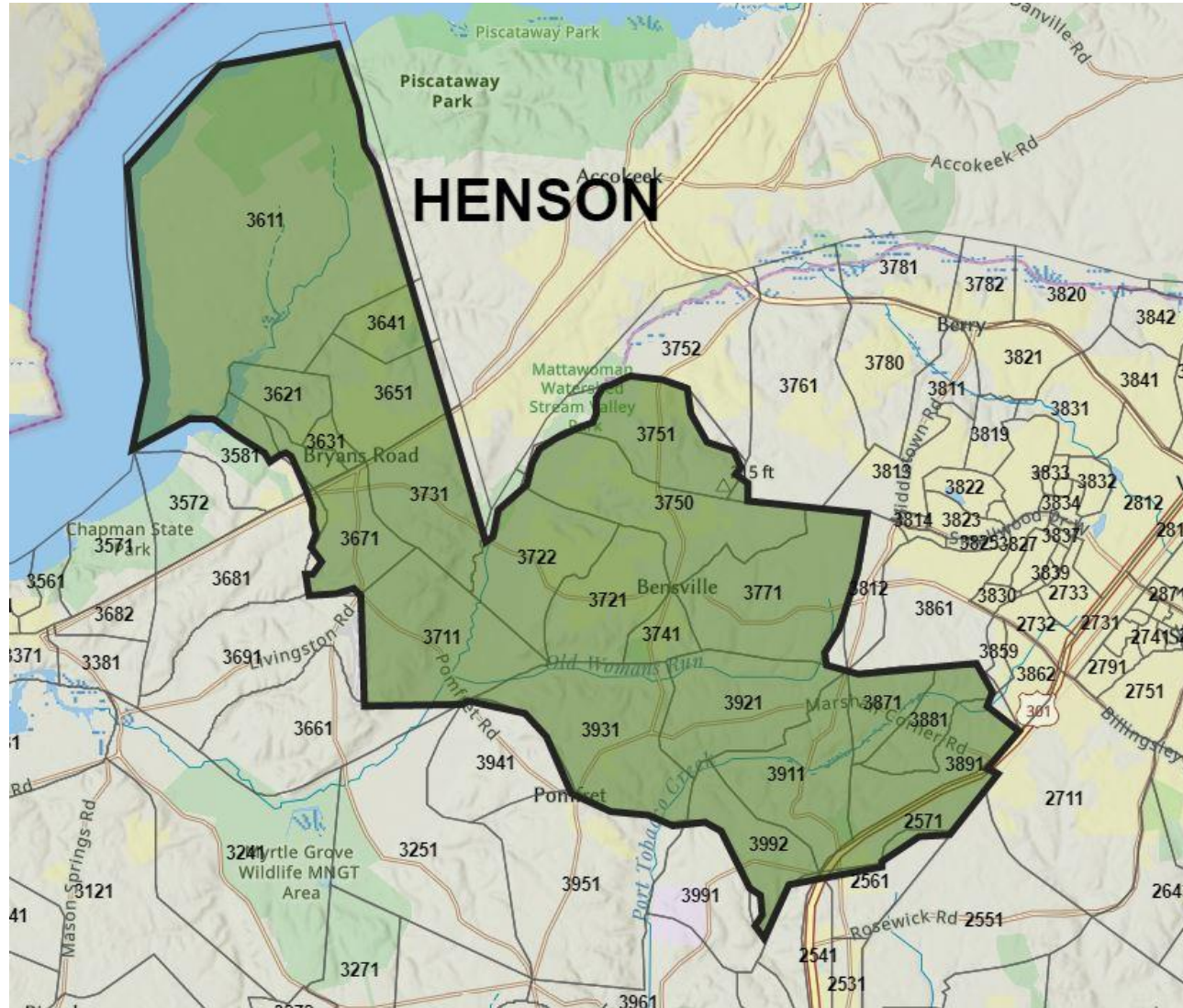
SY2022-23:

654

SY2025-26:

666

Alternative A



New Henson Zone

Alternative A

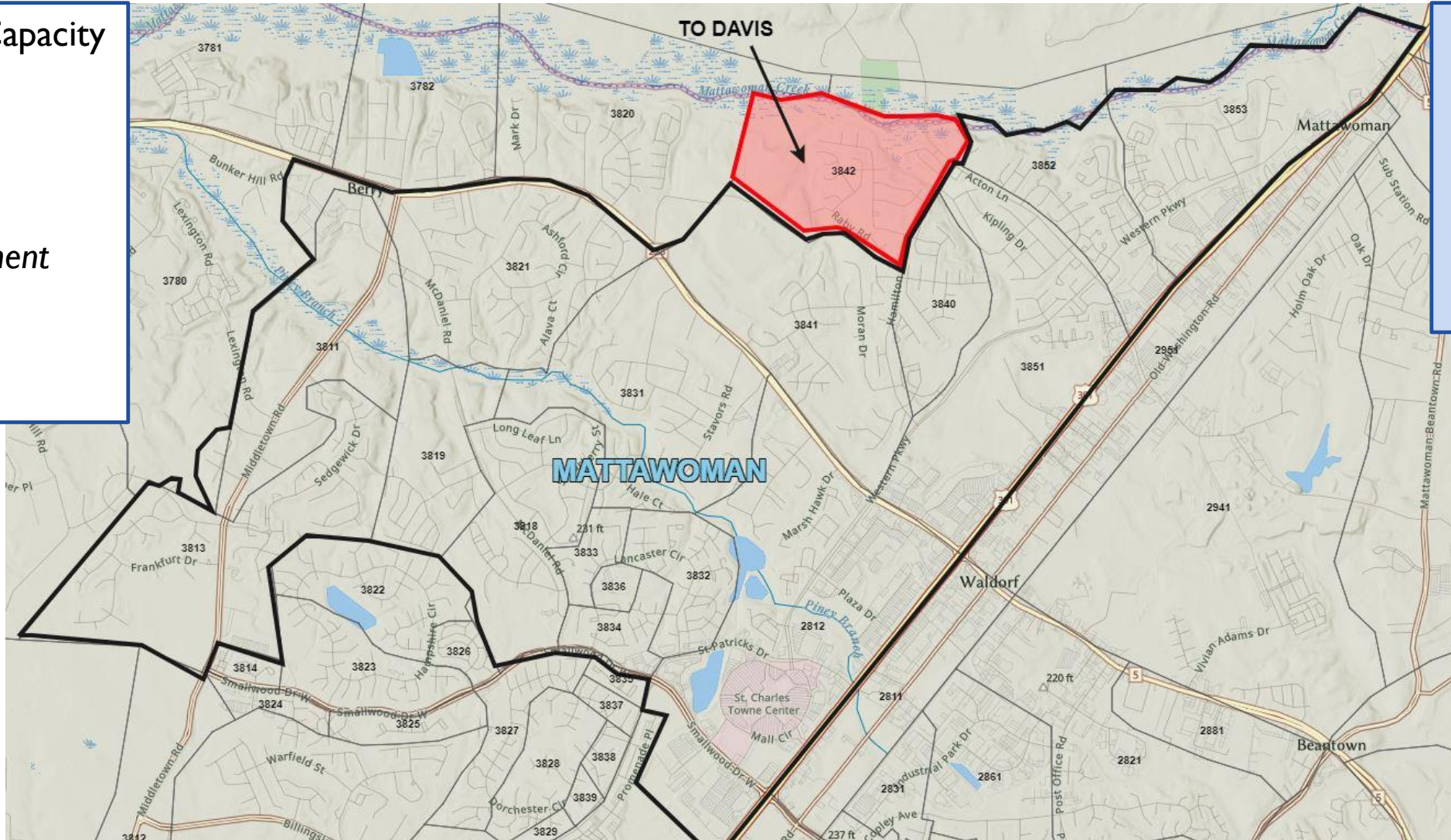


912

1026

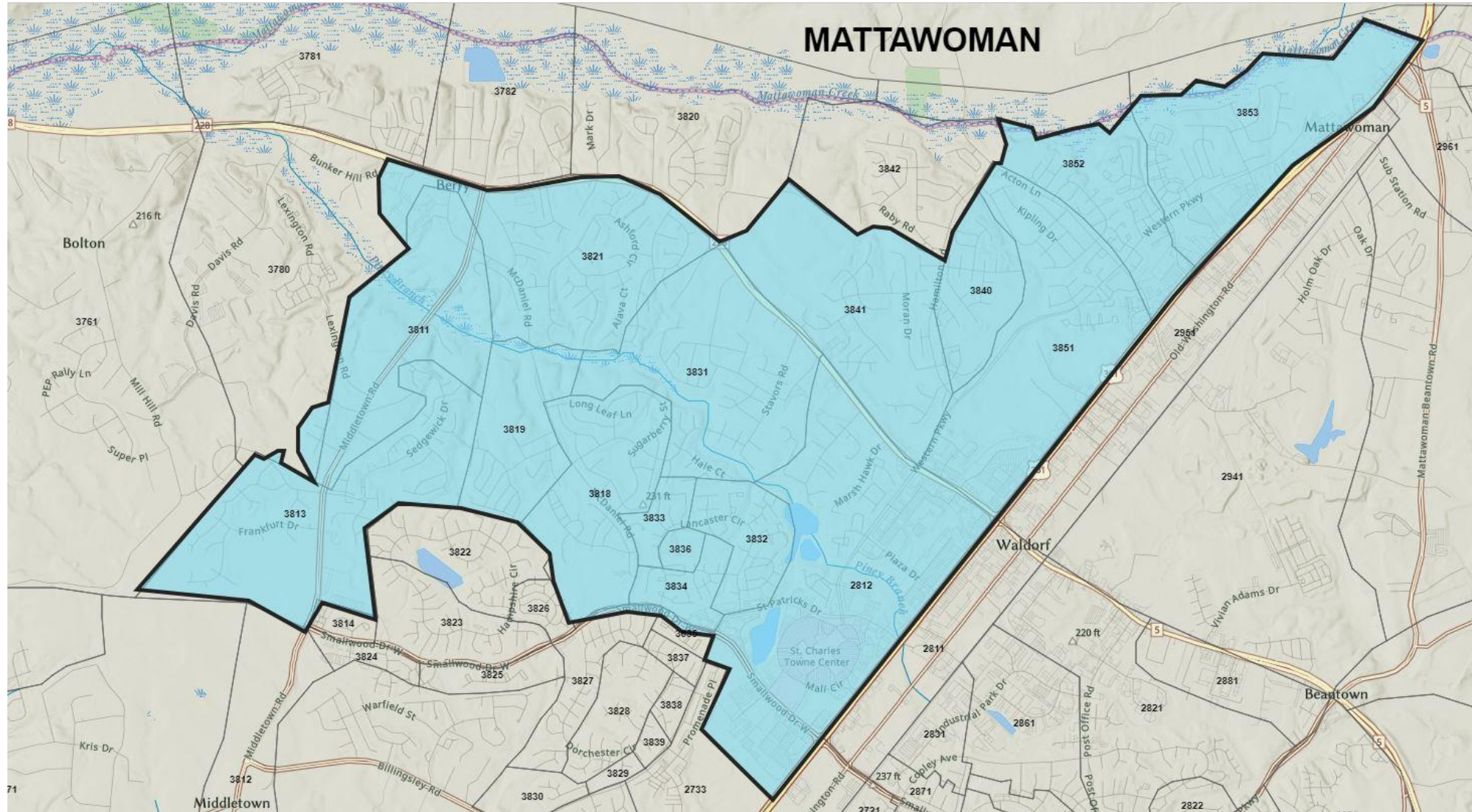
915

943



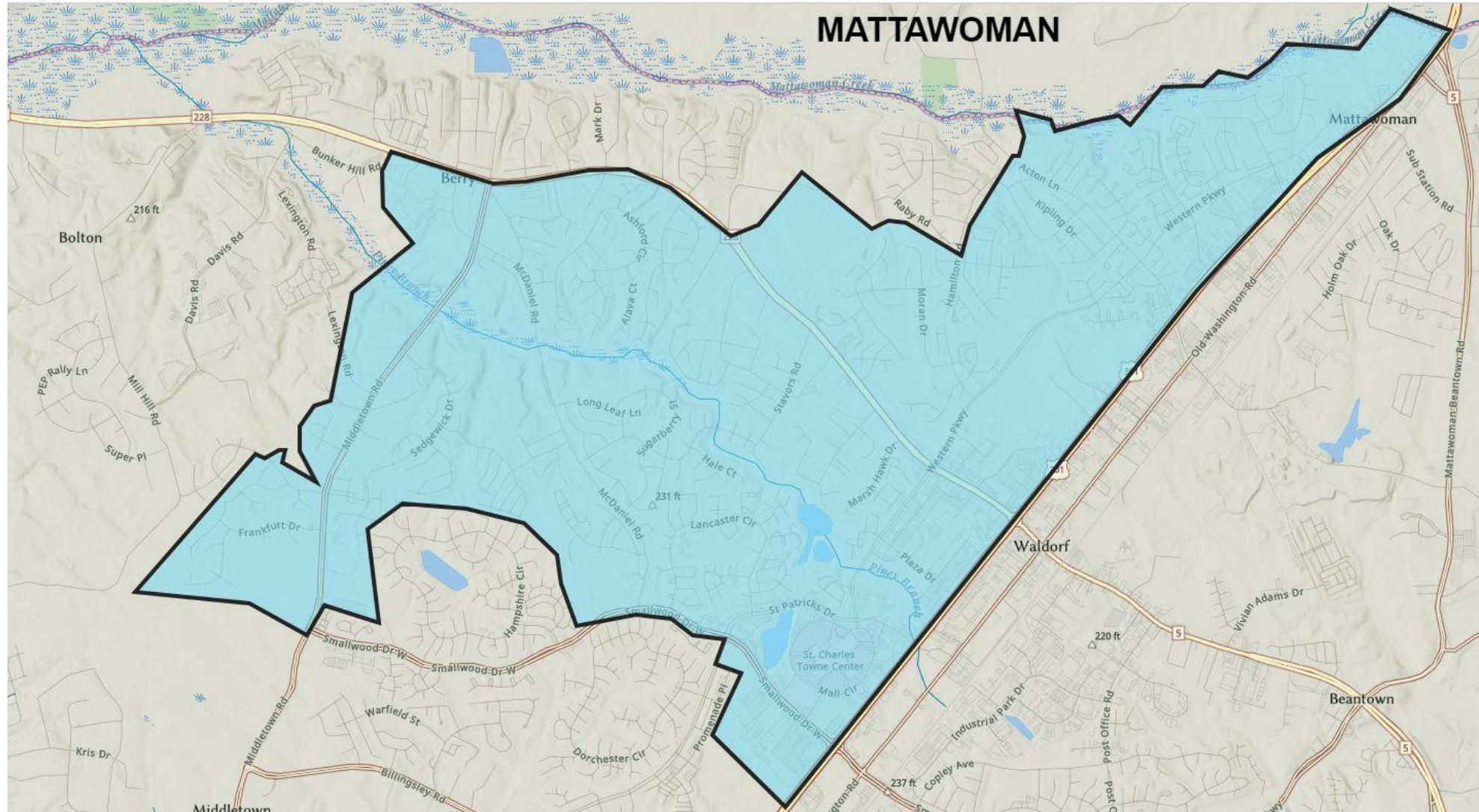
New Mattawoman Zone with Enrollment Blocks

Alternative A



New Mattawoman Zone

Alternative A



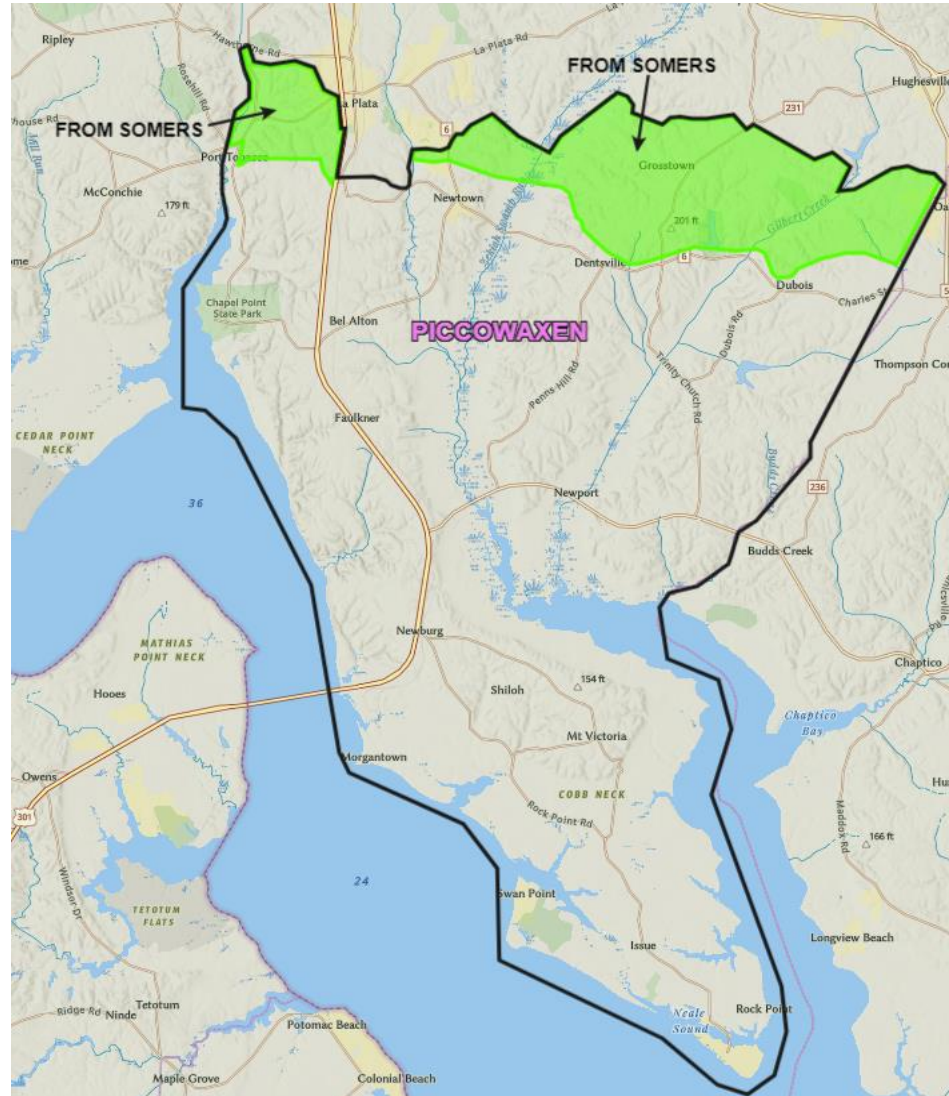
Piccowaxen Zone – Changes Alternative A

State Rated Capacity
(SRC):

563

Official Enrollment
(9/30/19):

450



SY2022-23:

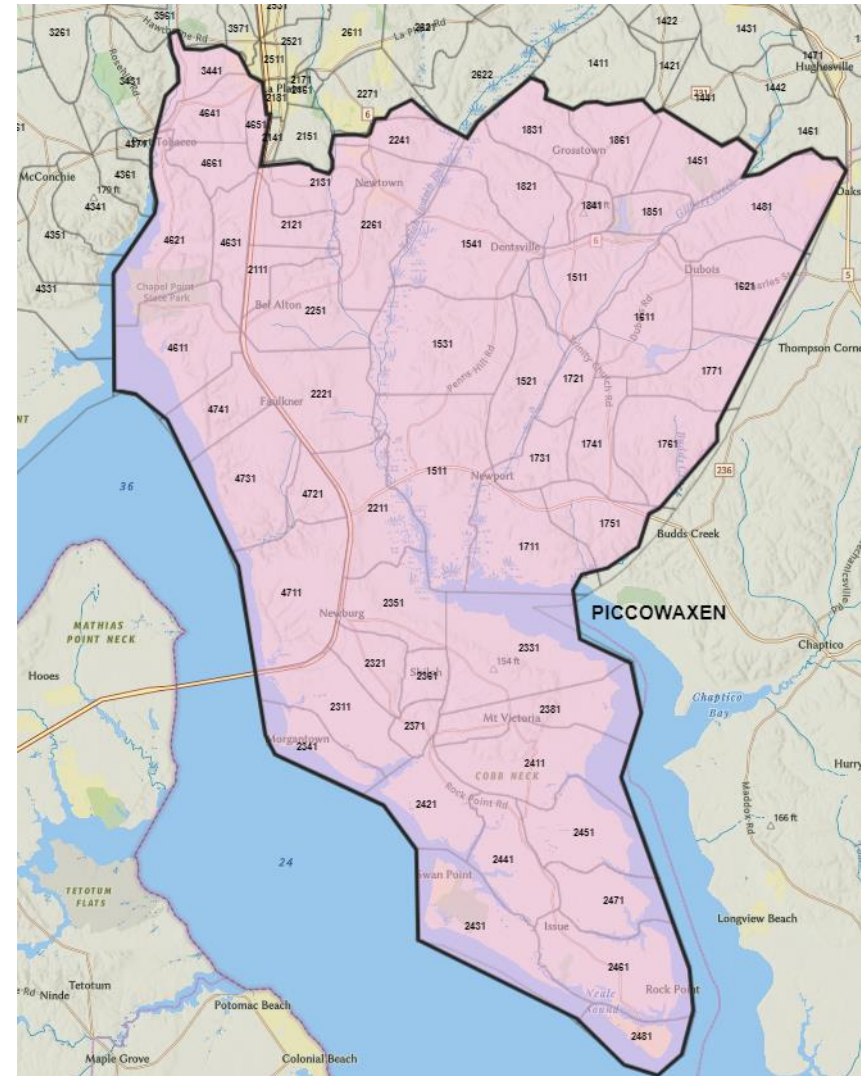
551

SY2025-26:

570

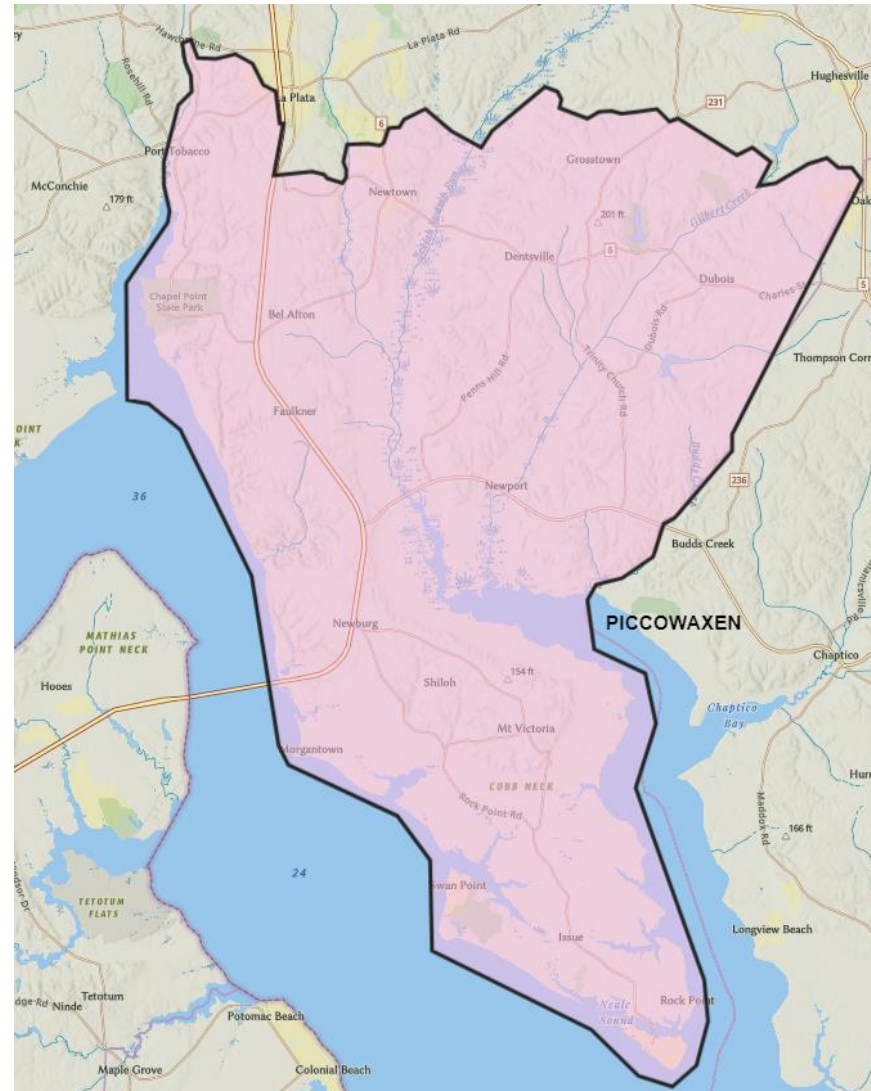
New Piccowaxen Zone with Enrollment Blocks

Alternative A



New Piccowaxen Zone

Alternative A



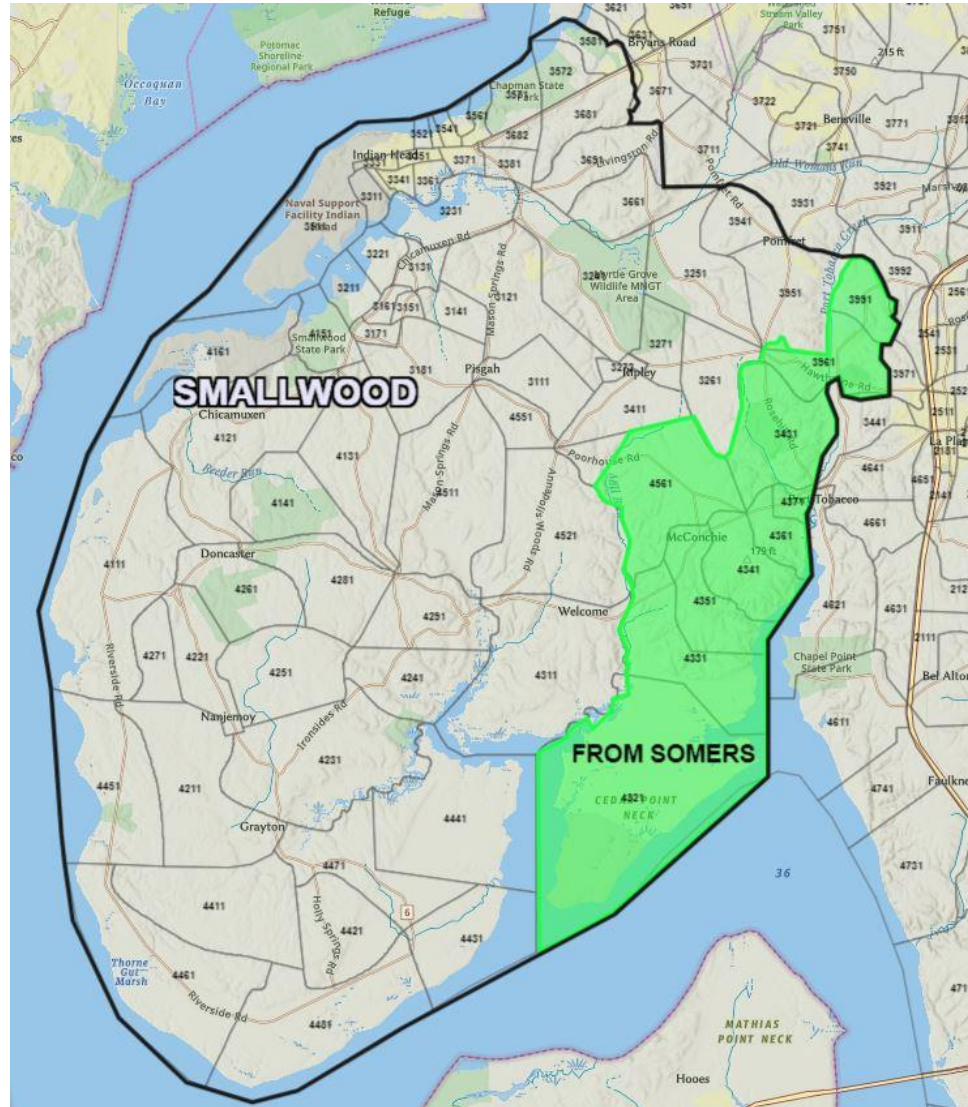
Smallwood Zone – Changes Alternative A

State Rated Capacity
(SRC):

604

Official Enrollment
(9/30/19):

527



SY2022-23:

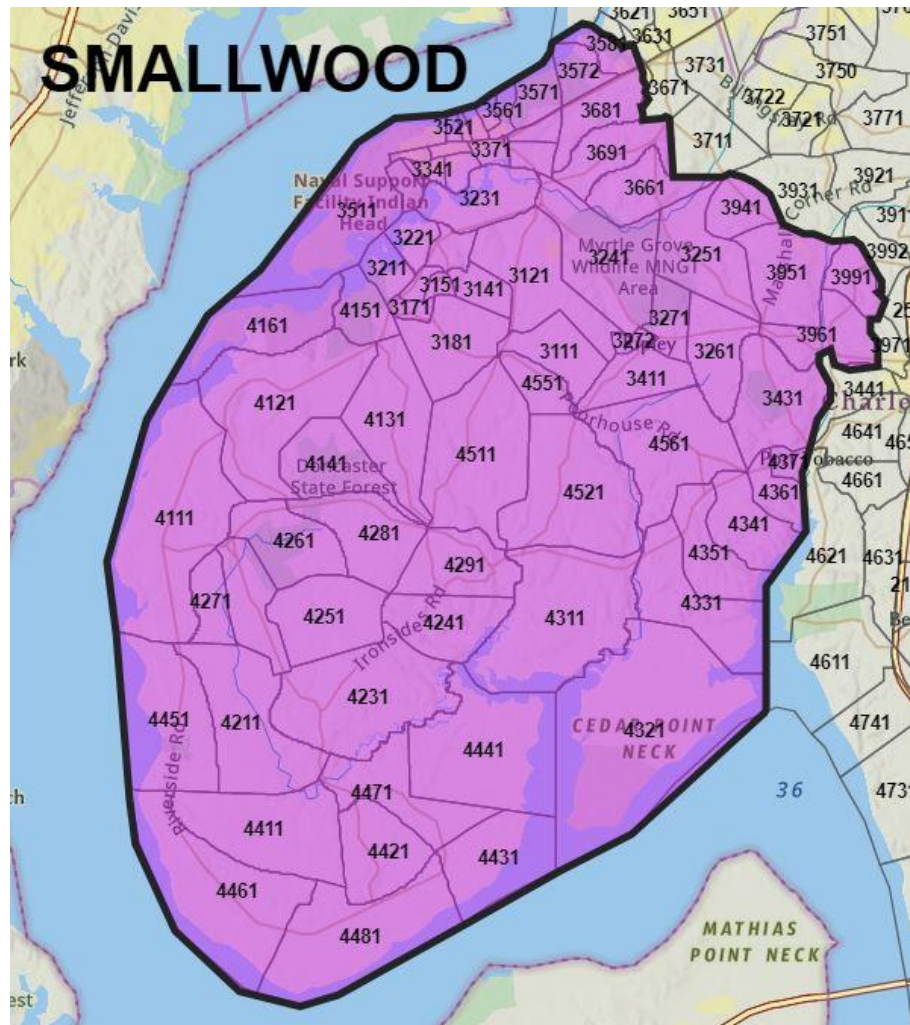
555

SY2025-26:

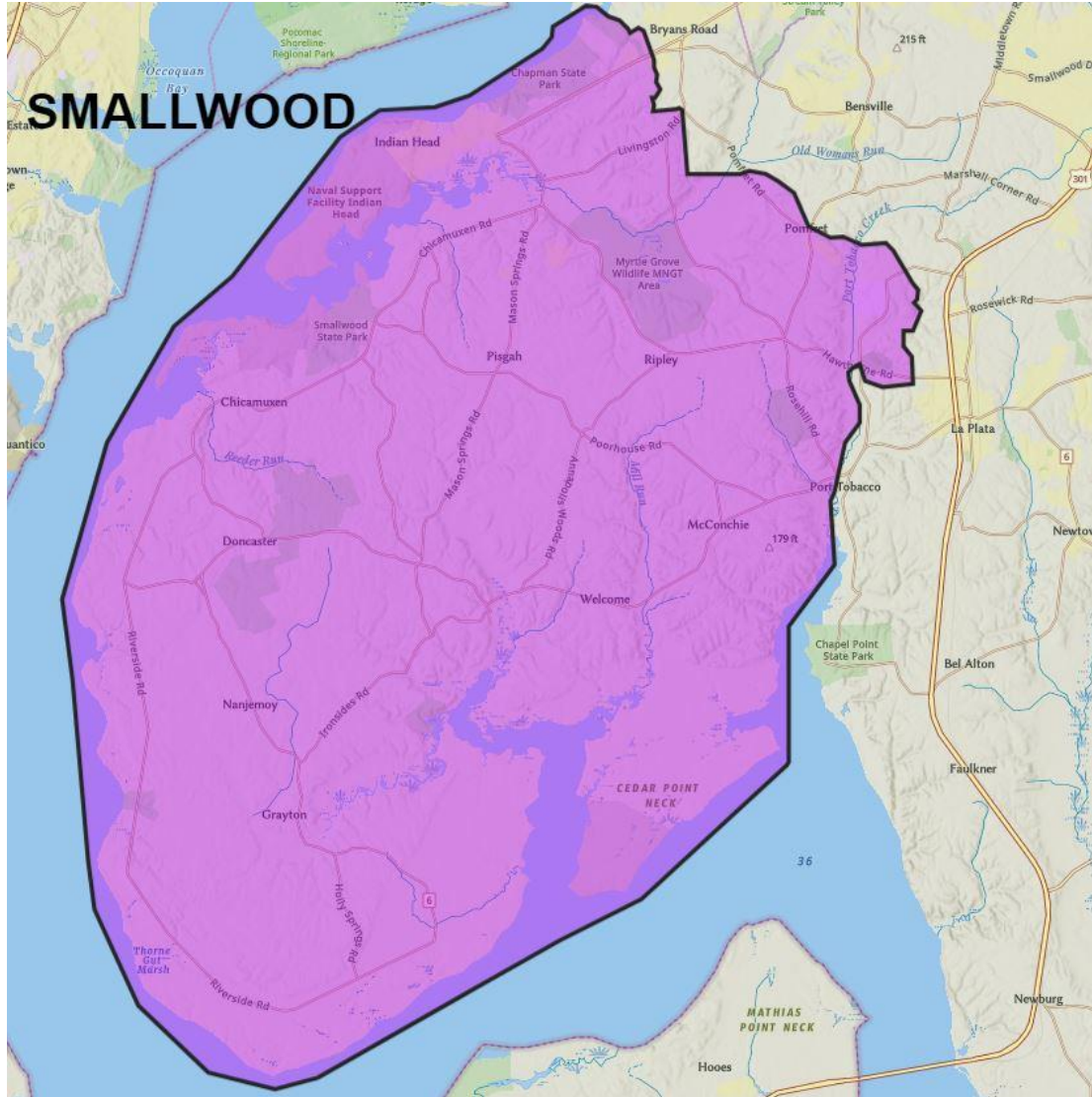
561

New Smallwood Zone with Enrollment Blocks

Alternative A



New Smallwood Zone Alternative A



Somers Zone – Changes

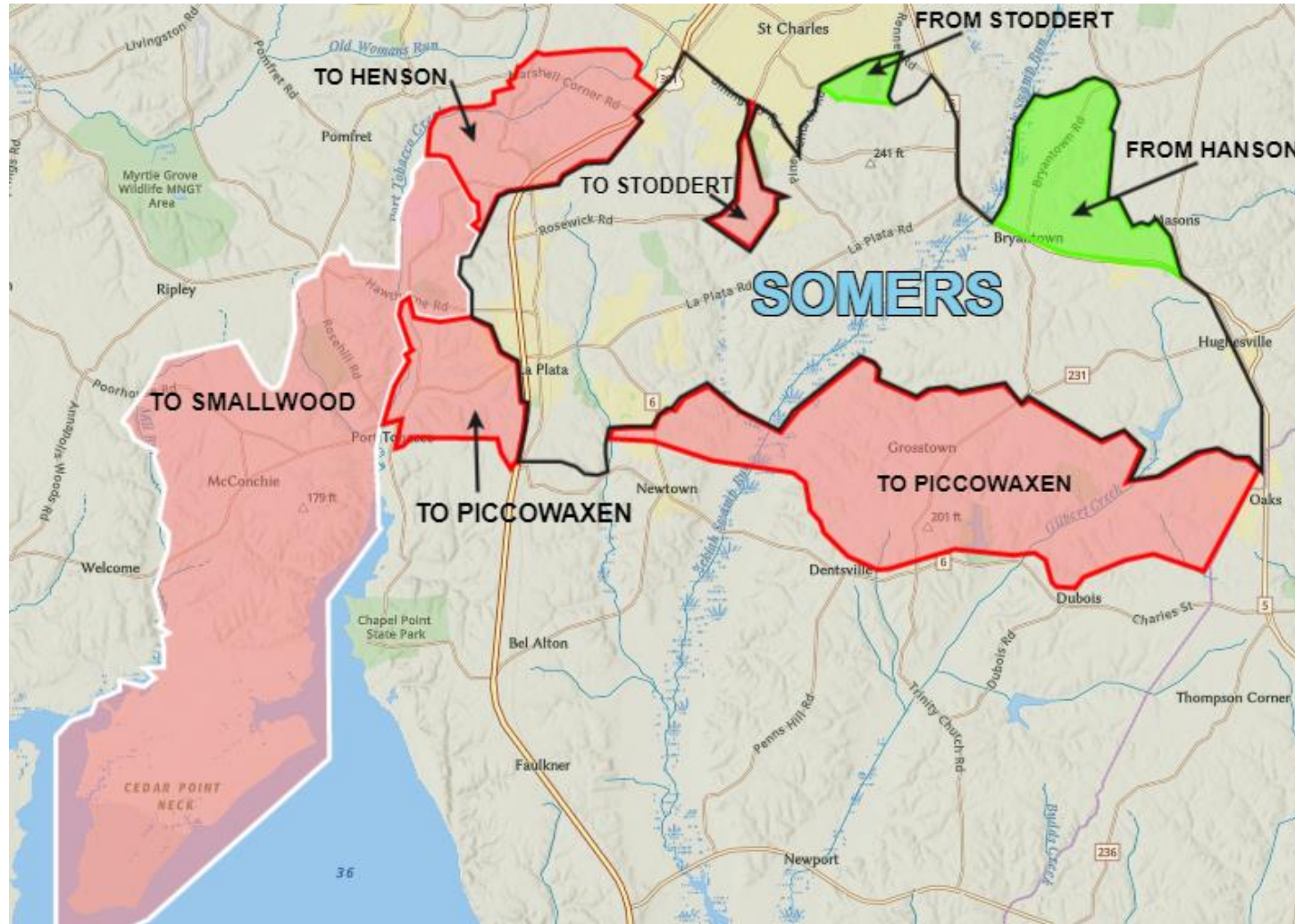
Alternative A

State Rated Capacity
(SRC):

795

Official Enrollment
(9/30/19):

1086



SY2022-23:

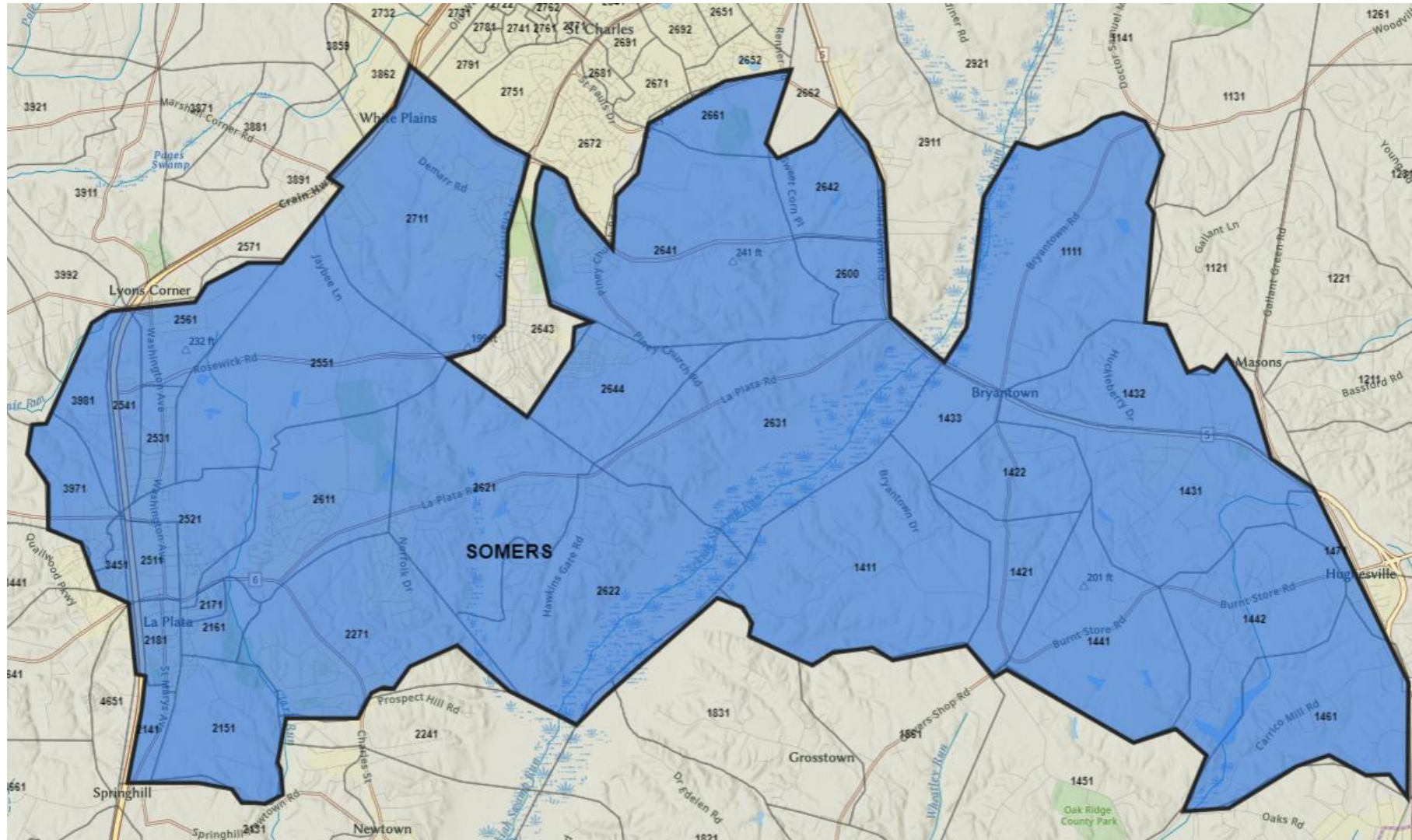
686

SY2025-26:

860

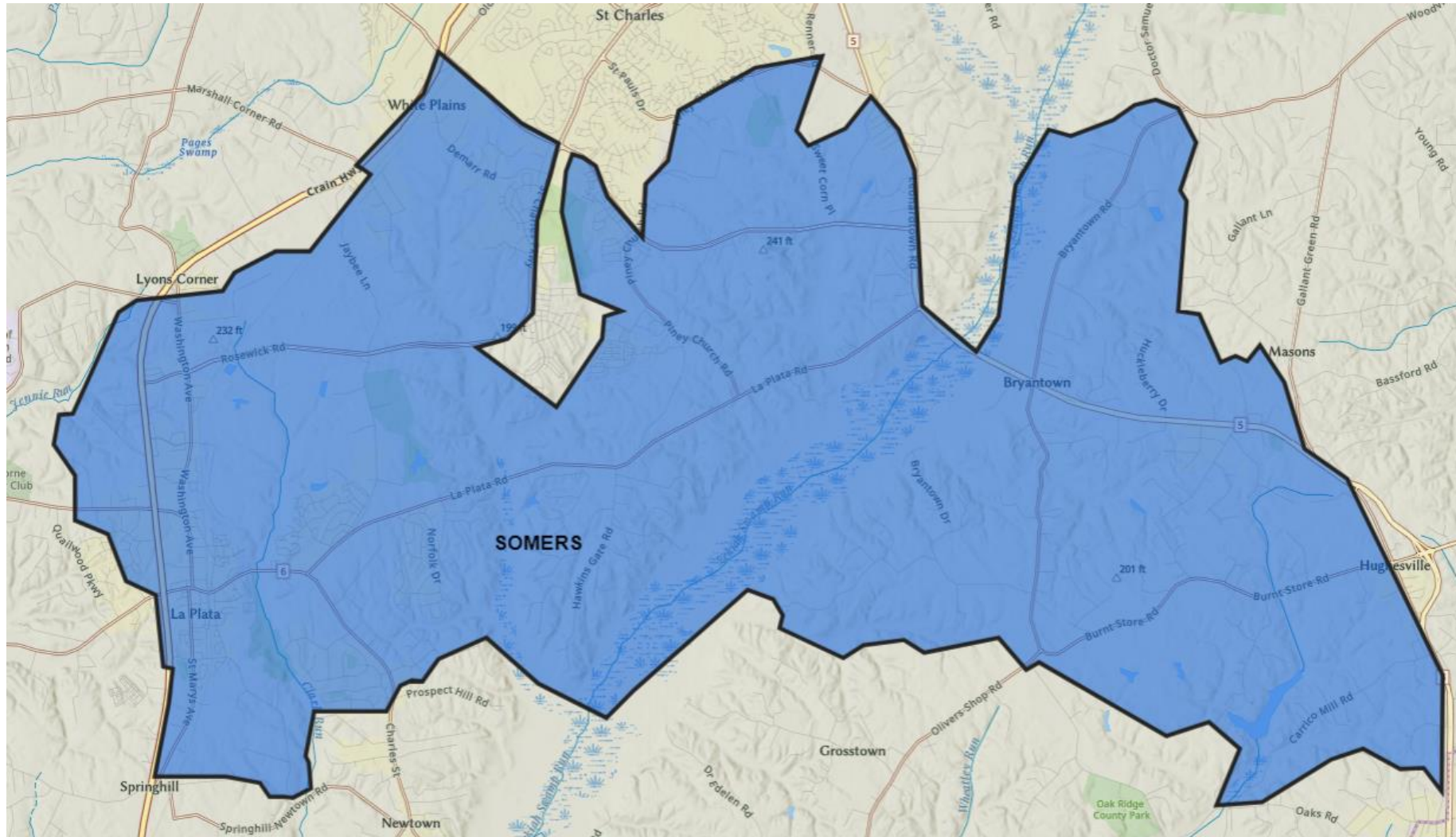
New Somers Zone with Enrollment Blocks

Alternative A



New Somers Zone

Alternative A



Stoddert Zone – Changes Alternative A

State Rated Capacity
(SRC):

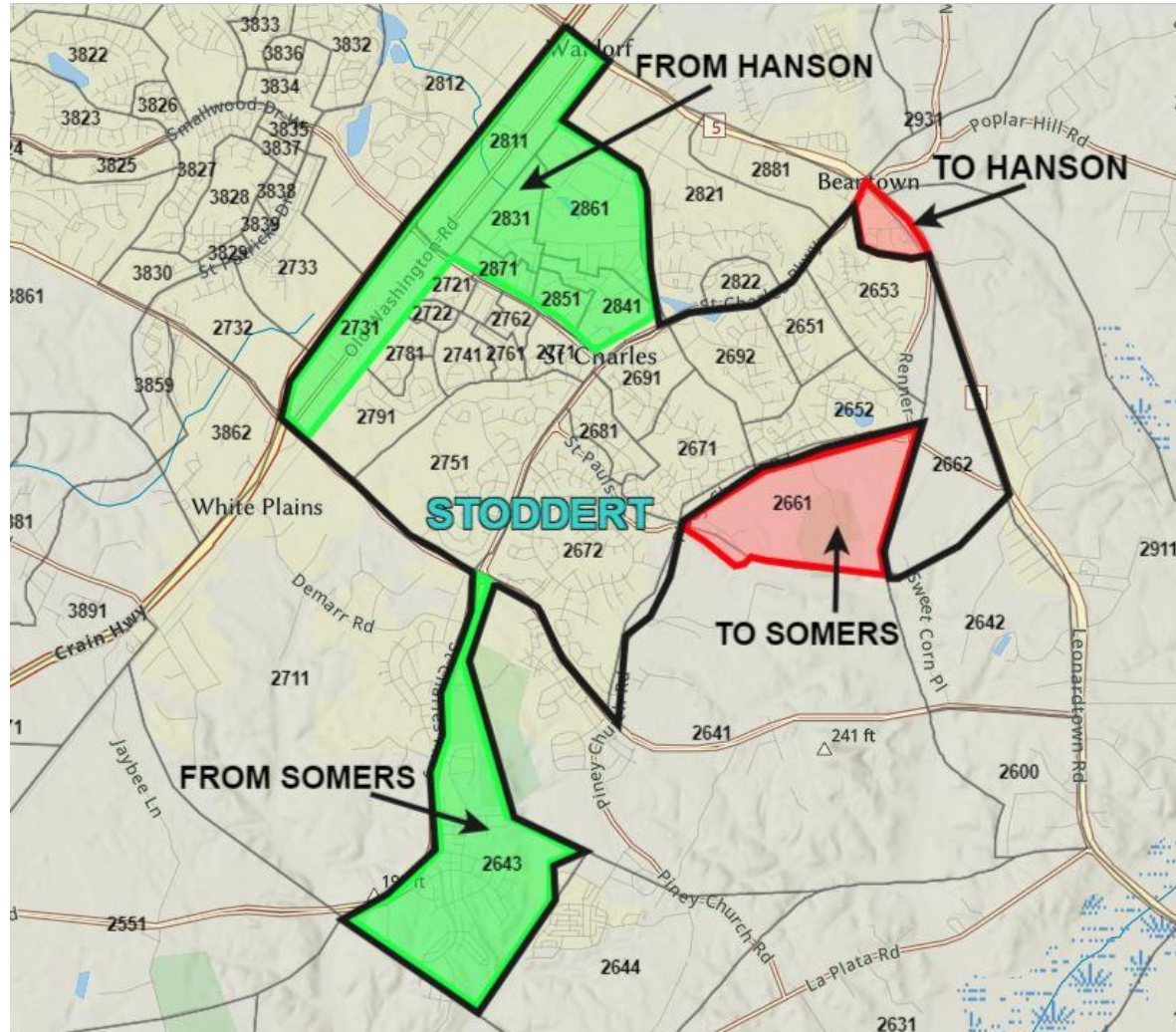
***975**

*Projected State Rated Capacity

Current SRC: **711**

Official Enrollment
(9/30/19):

814

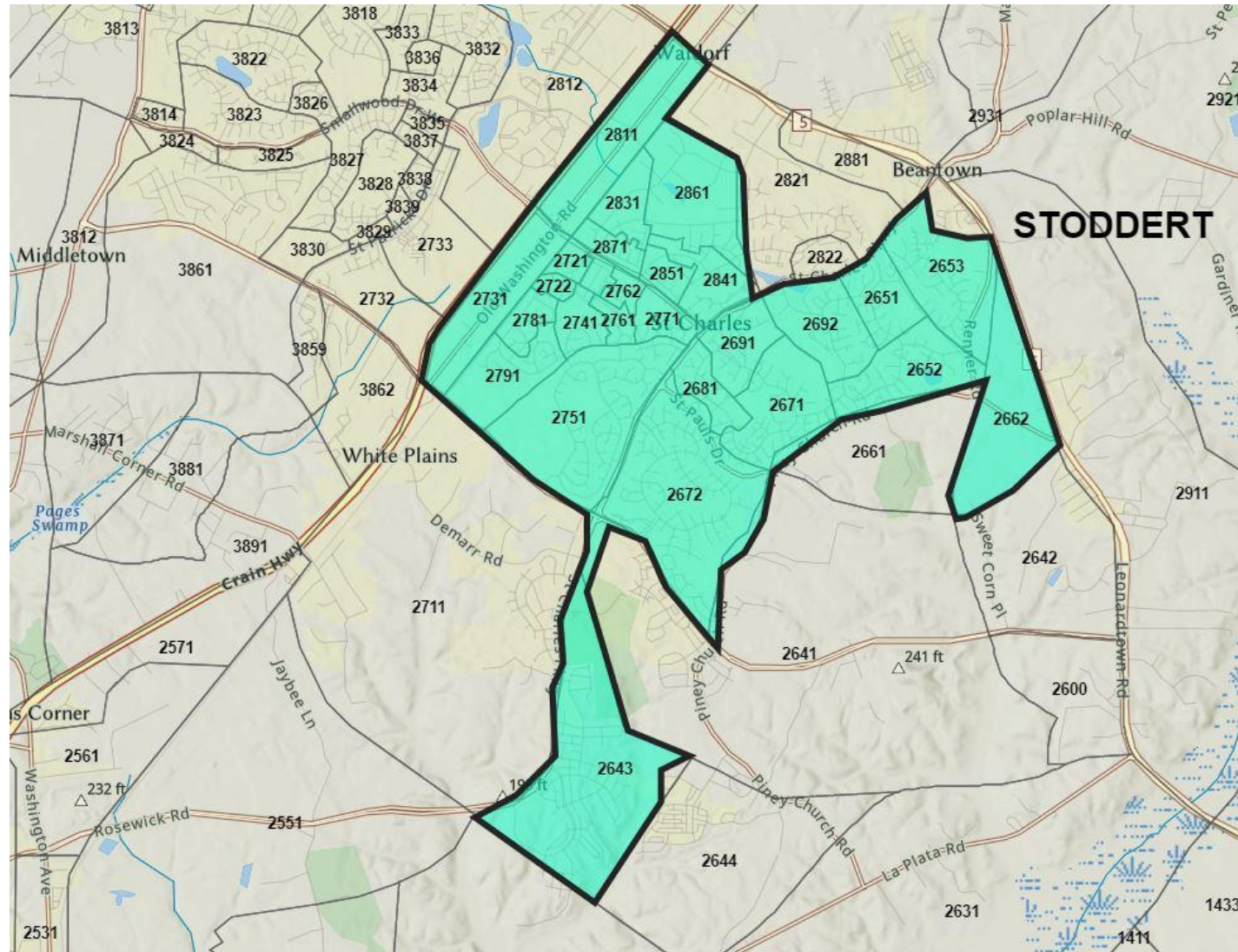


SY2022-23:

986

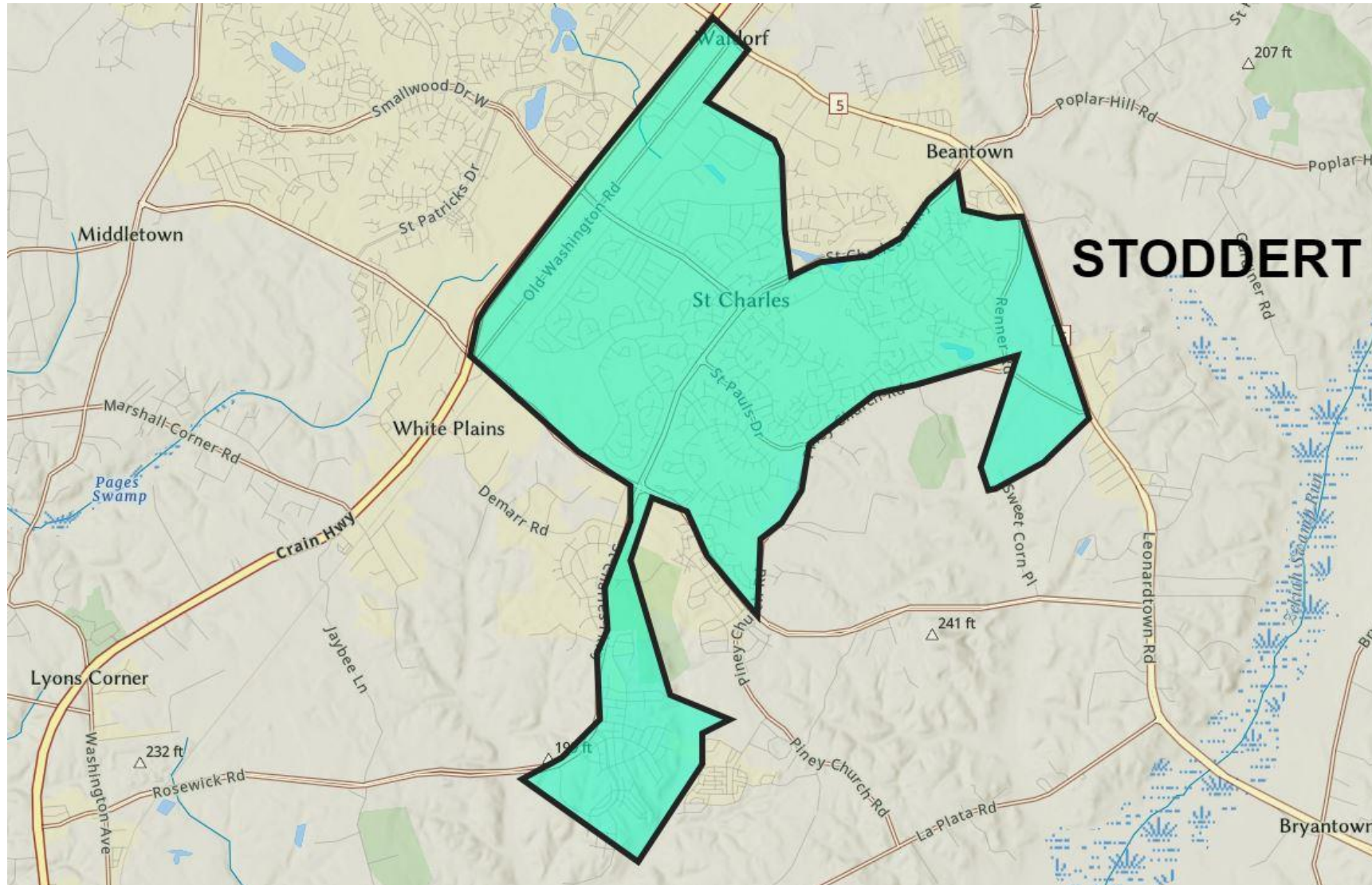
SY2025-26:

1019



New Stoddert Zone

Alternative A



Enrollment, SRC, and Growth - Alternative A

Middle School	State Rated Capacity (SRC)	Official Enrollment 9/30/2019	SY2022-23	SY2025-26
Theodore G. Davis	997	885	934	950
John Hanson	797	893	805	833
Matthew Henson	668	811	654	666
Mattawoman	912	1026	915	943
Piccowaxen	563	450	551	570
General Smallwood	604	527	555	561
Milton Somers	795	1086	686	860
Benjamin Stoddert	*975	814	986	1019
*Projected State Rated Capacity				



Resources

Find information on redistricting.

www.ccboe.com/index.php/redistricting-middle-school-ql

Explore the interactive map.

Alternative A:

<https://tinyurl.com/AlternativeAccps>

Email comments.

redistrict@ccboe.com



What's Next?

Monday, September 27, 2021	Public hearing from 6:30 to 8:30 p.m. at Westlake High School.
Tuesday, Sept. 28, 2021	Virtual public hearing from 6 to 8 p.m.
October 2021	The Board takes action. Redistricting decision takes effect at the start of the 2022-2023 school year.

Questions